

Covering council and community news for more than 25 years

Now online at www.greenwich.gov.uk/greenwichtime

No.110 August 10 2010

Music to our peers- Page 5



Year Six test results best ever

by Pat Greenwood

GREENWICH pupils leaving primary school this summer have received their best ever Key Stage 2 results for English and Maths.

It means the borough's 11-year-olds will have a flying start at secondary school this September.

For the third year running, test results for 11-year-olds in Greenwich have improved faster than the national average.

Results in English and Maths increased 2 percentage points to 80% for English and 81% for Maths. An impressive rise of 4 percentage points for pupils reaching level 4 in both English and Maths now takes Greenwich's score to 75%, which is better than the national figure.

Welcoming the Greenwich results, Cllr Jackie Smith, cabinet member for children and young people said: "Congratulations to all our pupils and teachers who have worked so hard to achieve these very impressive results. They reflect the importance that we place on challenging our young people to realise their potential and drive up their attainment. They provide a positive base for children taking the next step in their lives as they transfer to secondary school. These results

Turn to Page3

W.UDEN & SONS Ltd.
FUNERAL DIRECTORS
Established 1988
The Family Business that still offers a personal service

ELTHAM
51-53 Penny Lane, SE9 3DA
020 8850 2868

- Covering all areas
- Pre-paid Funerals
- Monumental Masons
- Private Chapels of Rest
- 24 Hour Service

Branches also at: Fife Wood, Haggis Hill, Dalmeida, Forest Hill, Sidcup, New Cross & Canning Wood

"WHAT DO YOU HAVE TO LOSE?"

Join our 12 Week Summer Special and you will get: Your own personal coach for **nutritional advice** and **personal training**, Great support to cheer you on, The opportunity to win a **cash prize**. Places go quickly so **BOOK NOW** to join the **ELTHAM WEIGHT LOSS CHALLENGE!!**

For Eltham Text WLC to 07970 007 336
For Charlton Text WLC to 07595 912 505 or visit www.the-weight-loss-challenge.com REF: ANGE

THE SUMMERTIME SMASH IS BACK!

THANK YOU FOR THE MUSIC

Fri 24 Sept ~ 8pm

Indigo at The O2

ABBA MAGIC & BEE GEES MAGIC

0844 844 0002
www.theo2.co.uk/indigo2

In my
opinionControl
man's
best
friend

MY heart beat quickens, I quickly clench my hands and slow down my pace until I'm at a complete standstill - frozen with fear. It saunters up to me unsure of its own motive, as I look around for an escape route. The owner doesn't blink an eyelid and before I know it I feel it analyse me with its nose and lick my hands. Its smell lingers long after it has lost interest in me. "Don't worry, Tiger won't bite you," says the owner whilst struggling to control the six-stone German Shepherd. I live in the borough of Croydon, which doesn't seem to have any regulations regarding the control of dogs - consequently, dogs are let loose on public roads as well as parks, and streets are dotted with dog excrement. Although most canines are harmless and friendly, there are many that are out of control or downright dangerous. I and many others have an intensive fear of dogs, not to mention the thousands of people who have allergies to dogs and animals alike. It means that for many people like

me a stroll through the park or even a walk down the street can be a frightening and stressful time. That's why I hear enviously about Greenwich Council's efforts to place legal requirements on dog owners by introducing Dog Control Orders. And I'm particularly impressed that the council has launched a special campaign to make sure youngsters are safe in public spaces over the summer holidays by checking dog owners are following the rules. Greenwich has shown that although dogs are 'man's best friend', man must have rules about their control in order to create a safe, clean and comfortable environment for all its residents. The rules say dogs must be on leads in public places, dog excrement must be cleaned up and dogs are only permitted in certain parks. The changes mean a walk to the corner shop without having to complete an obstacle course, and a jog in the park without becoming part of 'Tiger's' little game. Come on, Croydon, get your act together!

Olivia Patten

GT CONTACTS

GT is produced by Greenwich Council, Woolwich Town Hall, Wellington St SE18 6PW
Phone: 020-8516 4667
E-mail: peter@cfjournals.demon.co.uk

LETTERS WELCOME
email: greenwich.time@greenwich.gov.uk
Editor: Peter Cordwell
Assistant editor: Hilary Bryan
Chief reporter:

Pat Greenwood
Reporters:
Rod Kitson, Dick Townsend-Smith

Contributor:
Kevin Nolan

Advertising:
Call Nicola, Seniha or Gaynor on 020-8921 5572/5039/5101.

Distribution:
020-8921 5065.

New leisure centre deal for disabled

DISABLED people can now get leisure centre membership from less than £5 a week.

The new offer, made as part of celebrations to mark two years to go until London 2012, gives access to 30 centres run by Greenwich Leisure Limited (GLL) in all five Olympic and Paralympic host boroughs. The LONDON membership covers use of the inclusive gym, swimming and group exercise classes at peak and off-peak times at an

introductory price of £19.95 a month via direct debit. It also includes discounts on a range of other activities at the leisure centres.

GLL, working with Greenwich Council, unveiled the new deal at the 'Get Active in the Park' event organised by the council in Greenwich Park last month.

The Mayor of Greenwich, Cllr Barbara Barwick and Cllr John Fahy, the cabinet member for Olympics and Culture attended the event where there was a range of

free activities, based on Olympic and Paralympic sports, for people of all ages and abilities to try out.

Cllr Fahy said: "As an Olympic and Paralympic host borough it is important that our leisure centres provide facilities that both able and disabled people can access and are affordable."

He added: "The launch of this membership is another step towards providing an inclusive leisure service to local residents."

In Greenwich inclusive LONDON membership is valid at the Arches Leisure Centre, Coldharbour Leisure Centre, Eltham Centre, Sutcliffe Park Athletics Track, Thamesmere Leisure Centre, Waterfront Leisure Centre and The Warehouse, Sports and Performing Arts Centre.

• Visit www.gll.org/inclusivelondon
• Free swims extended for under 16s and over 60s, see p13.

A final salute

Woolwich says farewell to army commander

by Pat Greenwood

A UNIQUE working relationship between Greenwich Council and the Army was cause for celebration last Wednesday, August 4.

Borough leaders and reps from the Royal Artillery gathered at Woolwich town hall, Wellington Street, to say goodbye to local RA Station Commander Lieut Col Mark Gammon, after his two-year posting to the area.

The party was hosted by the Mayor of Greenwich, Cllr Barbara Barwick, supported by the two previous Mayors, Steve Offord and Allan McCarthy. Greenwich and Woolwich MP Nick Raynsford also attended.

Greenwich Council Leader Chris Roberts told guests: "Our thanks to Mark. The relationship between the borough and the Army is one that goes back a very long time."

He added: "One of the things I think is the most pleasing - and a great source of pride - is that our partners in the borough tell us this is the strongest relationship that any council has with them."

The council leader pointed out that, during Lieutenant Colonel Gammon's time in the area, the Woolwich Barracks has been secured as one of the major venues for the London 2012 Games - and, by the end of next year, there will be more soldiers posted in the area than there have been for a long time. The 600-strong Princess of Wales Royal Regiment and their families are moving in from Cyprus by the end of this



BEST WISHES: council leader Chris Roberts and Mayor Barbara Barwick offer their thanks to Commander Mark Gammon

month; the 130 members of the Kings Troop Horse Artillery will be based here by the autumn of next year.

Earlier, the Mayor said: "At the Armed Forces Day event, I said something that I will repeat again here: 'Woolwich is the Army; the Army is Woolwich'."

"We have only to look at the old Royal Military Academies in the Royal Arsenal and on Woolwich Common to understand how inseparable their respective histories are."

"And not just in Woolwich, but throughout the borough of Greenwich, the presence of military forces has shaped what we are today."

The Lieutenant Colonel, his wife, Judith, and their family are now off to RAF High Wycombe where Mark will work with the Joint Air Liaison Organisation.

His successor, Lieut Col Ed Brockman - who has been posted to Woolwich from the Ministry of Defence in Whitehall - told GT: "I started my career here in Woolwich back in 1988 when I walked through the Barracks gates to do my officers' course!"

Lieut Col Gammon and his wife were presented with a 1793 print of old Woolwich, overlooking the Thames and the Dockyard, as well as the borough's coat of arms.

There was also a cut-glass honorary plaque from Borough Police Commander, Richard Wood, and his colleagues.

The Lieutenant Colonel told everyone: "I am in a room full of friends, and I have worked with everybody so closely. This typifies what 'community engagement' is."

• The RA supported this summer's 'Sportathon' for borough primary schools, and a record 10,000 visitors came to a combined 'Armed Forces Day/Council Great Get Together' on Woolwich Common. Details of future events at www.greenwich.gov.uk/gettogether

DON'T FORGET TO RECYCLE YOUR COPY OF GREENWICH TIME

The new three Rs

Rebuild and refurb to revive Eltham Hill school

by Dick Townsend-Smith

A FULL-SCALE rebuild has been given the go-ahead for Eltham Hill Technology College on Eltham Hill.

It involves pulling down the existing 1970s buildings, refurbishing the original 1920s school and adding three new buildings. This will provide more than 9,000 square metres of floorspace, which means the college will be able to take 150 post-16 students. There will also be a new sports pitch, landscaping and car parking.

Greenwich Council's Planning Board gave the scheme the thumbs-up at a meeting last week. It will be funded as part of the Building Schools for the Future programme.

Work is due to start late autumn, and the project is expected to be finished in summer 2013. The building work will be carried out in two phases. The first involves demolishing the existing buildings in the north east corner of the site close to Eltham Hill to leave space for the new main school building and the new sports hall. The existing school will continue to be used while this is being done, with temporary pedestrian access from Queenscroft Park.

Once finished, the whole school will move into the two new buildings, while the second phase involving demolition work and refurbishment of the 1920s building gets underway. The plans mean three-quarters of the accommodation will be brand new, while a quarter will be in existing buildings that have been updated.

"This decision is excellent news for



Eltham Hill, and promises an exciting future for both staff and students," said Cllr Jackie Smith, the council's cabinet member for children and young people.

Meanwhile, development plans for four other borough schools have been cancelled following the government's cuts to the Building Schools for the Future scheme. They are Blackheath Bluecoat, Eltham Green, Kidbrooke and Shooter's Hill Post-16 Campus.

• More information about schools in the borough visit www.greenwich.gov.uk/school

GLIMPSE OF THE FUTURE: an artist's impression shows the newlook Eltham Hill school to be finished in summer 2013

Borough BRIEFS

Storytime by the Big Screen

CHILDREN'S author Guy Bass will be reading stories from his own books to help launch the Big Screen Story Time on Thursday, August 12. Events run from noon to 3.30pm in General Gordon Square by the Big Screen and visitors are invited to bring a picnic, hear a story and watch a story on the Big Screen. The writer will be reading live from 12.45 to 1.15pm. He'll also be visiting Blackheath, Eltham and Woolwich libraries later that

day followed by visits to Claude Ramsey, New Eltham and West Greenwich libraries on Friday, August 13. Details at your local library or visit www.greenwich.gov.uk/libraries Thursday's launch will include readings of traditional stories, interactive games and the council's Libraries Service will be promoting its Summer Reading Challenge for children. Visit greenwich.gov.uk/bigscreen

From page 1

give them a great opportunity to continue their success."

For the first time, the government has published the teacher assessment results alongside the test results, and in both assessment methods Greenwich pupils continue to make impressive improvements. Greenwich's Key Stage 2 teacher assessment results are also above the national results in every subject.

'Time' called on anti-social street drinkers

TIME has been called on trouble-making drinkers who make a nuisance of themselves in Greenwich's shopping centres, streets and parks.

The police have been given discretionary powers to take away alcohol from anyone who is causing trouble, or who they think might start behaving badly after a few more drinks. And the new rules, called a Designated Public Place Order (DPPPO), apply equally to every public place across the borough.

This is not a blanket ban on drinking in public. People have nothing to fear so long as they behave and don't turn anti-social. But if they do misbehave, police officers can order them to hand over their cans and bottles. Failure to comply can lead to an arrest and a fine of up to £500.

The move has already paid dividends in Thamesmead, where a group of persistent drinkers have moved on after police confiscated their drink when warnings were ignored.

Sgt Noel Carmody, from the Thamesmead Moorings Safer Neighbourhood Team told GT: "The implementation of the DPPPO has given us the opportunity to target the persistent street drinkers who frequent Arnott Close. Their behaviour has caused undue concern to local residents. We have been confiscating alcohol and issuing warnings, and this appears to have convinced those concerned to refrain from drinking in the area."

Posters and window stickers to tell people about the new rules have been sent out by Greenwich

Council to about 700 licensed pubs, clubs and restaurants, as well as to shops that sell alcohol. Safer Neighbourhood Teams have visited licensed premises to speak to landlords and ask them to display the new stickers and posters. Metal signs giving a similar message are being installed in public thoroughfares and parks.

Cllr Maureen O'Mara, the council's cabinet member for neighbourhood services, told GT: "These new moves should be seen as good news for all our residents, including those who like to have a drink in a public place, such as on a picnic in the park or other social event."

"The rules are designed to help the police clamp down on troublemakers who are a nuisance to everyone else."



'Independence • Rights for All'

We are a user led organisation run by disabled people for disabled people

PERSONAL ASSISTANTS AGENCY

We offer disabled people the opportunity to choose who, when and how their requirements for assistance are met.

Choice and Control

A Personal Assistant (PA) does many tasks both with, and on behalf of disabled people. Their jobs, and the standards worked to, are defined by you - the client.

You're the boss

- You choose your own fully trained and qualified PA from us.
- We deal with employment issues including payroll, insurance and safety checks
- You will have the full support of an experienced office team
- Whether you're an independent client or council funded we can help you
- GAD is also involved in the ISF pilot

We can also refer you to a range of different services including Welfare Rights, Advocacy, Volunteering Opportunities, Information Advice and Community Involvement.

For more information (including who to talk to if you are interested in Personal Budgets or Direct Payments)

Contact: The Agency Manager, Mark Foulds

Call: 020 8305 2221

Minicom: 020 8858 9307

Email: agency@gad.org.uk





Letters

Write to: GT Letters, Communications Team,
Woolwich Town Hall, Wellington Street, SE18 6PW
or email greenwich.time@greenwich.gov.uk

Pedestrianisation could be a good move

I SUPPORT the proposed pedestrianisation of Greenwich town centre. Over the years Greenwich has seen a huge rise in pedestrian numbers and in the coming years this will increase. Greenwich is a World Heritage Site, and with the completion of improvement works to the Cutty Sark and surrounding Cutty Sark Gardens, the pier and the National Maritime Museum, we would all expect more people to visit. Soon we will be hosting a number of Olympic events thus bringing in more pedestrian visitors. In bygone years the centre was only really accessible by road, overground rail and foot.

The town can now be accessed by road, rail, river, and the DLR / Underground. The market, Cutty Sark Gardens and the ORNC is where the bulk of pedestrian numbers circulate. This area is dominated by an outdated road traffic flow system that needs to be rerouted to allow safer and easier pedestrian access to these key areas. College Approach in particular has become a focal point because all the major attractions are accessible from here, however, it is clogged head to tail with road traffic. At present we have a situation where

Star Letter

vehicular traffic takes precedence over pedestrian traffic albeit that the pedestrian numbers far exceed that of vehicles. The time is right for change and a new approach to Greenwich town centre. Let's embrace that and move forward. Pedestrianisation is not about knocking down the old, it is about giving access and opening up the town centre to residents and visitors alike. It will create a better and more spacious environment in the town centre as well as

improving aspects of health and safety. Families visiting Greenwich Town Centre will be able to roam freely without the worry of children being knocked down by a vehicle. There are few boroughs that hold as many historical treasures as Greenwich. Unfortunately at present, our borough is surrounded by a vehicle traffic flow system that is flawed and outdated. Correcting the traffic flow in Greenwich will enhance the town centre and make it more enjoyable for everyone.

Fergus Noone, College Approach, Greenwich

YOUR story 'Plastic ban in the bag' (July 27) reported that residents at a meeting with Transition Westcombe in St Alfege Church Hall wanted to reduce traffic through Greenwich. True. But you omitted the main conclusion of virtually all of us at that meeting - that the proposed gyratory system will be bad for Greenwich residents and businesses. I can see that the proposed pedestrianisation would enhance the experience of visitors

walking from Cutty Sark Station to the Olympic site, but so would cutting the traffic in the present one-way system to one lane (which is all that enters from Creek Road anyway), widening the pavement correspondingly, and directing visitors to the Olympics through the pleasant grounds of the Old Royal Naval College. This would cost Greenwich people much less, in both money and misery.

Suzanne Miller, Roan Street, Greenwich

● Consultation on the pedestrianisation proposals closed on August 1. Comments received will form the basis of a detailed report to be presented to councillors for a decision. If it is decided to implement a scheme, the council will work closely with residents, traders and other groups on the detailed development of the scheme. Give your views at www.greenwich.gov.uk/haveyoursay Ed

Let's work together to get it sorted

RE your story Get it sorted! (July 27) I think enough is enough when it comes to Greenwich Council, or any other council, blaming the people who pay their wages for not dealing with their waste properly. We the tax payers have spent millions on trying to deal with this country's waste, and we must all do our bit. For 10 years I've been trying to spread the word about how I reuse and recycle waste plastic containers to grow things. It reduces the number going into landfill and also uses less water. Many people have learned about the way I do things through the many presentations I've done to help promote the reuse of waste. But because there's no money to be made the council and the government won't endorse my ideas - so even when you do try to do your bit to help our waste problem, the powers-that-be don't want to know. I say all our waste should be treated as a resource rather than being treated as just waste

John Pendergast, Eltham

● HOUSEHOLD waste is generated by people and it is appropriate that they are asked to do as much as they can to prevent it being disposed of via landfill or incineration. Pleased to hear that you are a keen

recycler, unfortunately not everyone is as conscientious and 8,000 tonnes of recyclate was rejected last year because it was contaminated by residents putting the wrong waste in the blue-

top bin. Our crews check the contents of the mixed dry recycling bins before emptying but it's not possible to spot everything. Where households continually put the wrong waste in the bin we provide

additional information, and advise how they can do it right. These measures are helping and the level of contaminations, and therefore rejected recycling, is falling.

Ed

OUR Star Letter writer will win two tickets to a Charlton Athletic match at The Valley for the 2010/11 season, so get writing! For information on 2010/11 season tickets please visit www.cafc.co.uk or call 0871 226 1905.



Pic Spot... send yours to peter@cfjournals.demon.co.uk



DAVE MASON: This image was taken during the Blackheath Kite Festival. I enjoy visiting such events and observing the people while on the look out for photographs. Blackheath hosts a whole season of events including fun fairs, festivals and indeed the London Marathon - all of which offer the photographer a whole range of photographic opportunities. I visited the Kite Festival with fellow members of the Aperture Photographic Group details at www.woolwichphotographic.com

Why print GT in Watford?

AS I was tossing your newspaper into the recycling bin, I noticed that it was printed in Watford. WATFORD? What are you thinking?

Peter White, Greenwich

● The tender for printing GT was let as part of a consortium between five London Councils. Any printer was able to bid for the contract. Trinity Mirror won the contract to print Greenwich Time. The contract has delivered substantial savings which have played a large part in reducing the costs of GT from 22.3p a copy to a net cost of 3.5p per copy last year. Ed

Thanks for the melodies

Pupils play it by ear at summer music course

by Pat Greenwood

MUSIC and music-making has always struck a high chord with the borough's schools.

And one of the highest notes of every year is the four-day summer residential course, open to enthusiasts aged 11 to 18.

Greenwich Music Service (GMS) takes around 50 young people to Wrotham in Kent. They put together a 90-minute concert programme, and then travel back to perform it at Kidbrooke School for parents and friends.

The young people rehearse in the morning and the evening, with team-building challenges in the afternoons. The residential is a well-loved tradition which has continued for around 18 years.

Tutors are keen to introduce

Both my daughters have advanced so much

students to Big Band, develop their small group ensemble-playing and encourage informal music-making when course members perform for each other.

This time, the final concert programme included "Doo Wop" vocals, baroque music with a hip-hop treatment, big band jazz and electronic music, as well as a Balkan folk piece.

Matt Coomb, from Thomas Tallis School, Kidbrooke, is a bass guitarist, drummer and singer - an now a music mentor too.

The 17-year-old from Blackheath, who has played bass from the age of seven, told GT: "I work with two bands, whose ages range from 11 upwards."

Matt, who loves all kinds of



SWEET SOUNDS: youngsters prepare for the performance at Kidbrooke School

funk and rock and jazz, has now done four residencies.

He said: "I like to listen to the others 'doing classical'. And everyone just helps each other."

Violinist Rose Ives, also 17, and from Plumstead, is in the 6th Form at Kidbrooke School, and she's also done four of the summer residential courses.

She said: "I like it because you're with musicians 24/7, living the life the whole time!"

Joshua Hickman, 12, from Greenwich, is a pupil at The John Roan School.

The former Halstow Primary School pupil started playing guitar from the age of nine and said: "I've been on two residential courses, so now I have a bit more responsibility and help to look after the new ones."

Anna Barnes, 13, from Eltham's Crown Woods School, has been playing both flute and drums since the age of six.

She told us: "This is my first residential and it's been really fun, especially the Big Band pieces where it's really exciting, really energetic - and so loud!"

Proud mum Mary Otuko from Abbey Wood has two musical daughters.

This year, Sharon, now an 18-year-old uni student and a clarinetist, was at the concert to support 15-year-old Vanessa, who plays the saxophone.

Mary said: "Both my daughters have advanced so much. The quality of the music played is just amazing, and they meet other children. I've really watched them 'grow' into playing some really beautiful pieces."

Around 1,500 of Greenwich's primary school pupils get a chance to make music every week under the 'Wider Opportunities' programme. Their range of instruments includes violin, trumpet, clarinet and flute.

Young people who show a real interest are encouraged to attend one of the borough's four Saturday music centres. Anyone aged eight and over can go to the centres at Kidbrooke School, Woolwich Polytechnic or John Roan. There is also a rock and pop rehearsal project at Eltham Green School for secondary school-age students.

● **FIND OUT** more about Greenwich music in schools at www.gmusic.org or ring 020-8331 3167 in term time.

You can now follow Greenwich Council on Twitter @ Greenwichcouncil

THE CHESS CLUBS

Chess is a Mind Sport that develops the brain.

It can improve your child's concentration and focus and help them to problem solve!

Chess can help your child perform better in school too.

Come along to a Chess club at:

Glyndon Community Centre,
75 Raglan Road,
Plumstead, SE18
on Fridays 4pm-6pm

Phoenix Hall,
Walpole Place
Brookhill Road,
Woolwich, SE18
Mondays 6pm-8pm

First taster session at
Eltham's New Junior
Chess Club @
The Friendship
Centre
Eltham Park Baptist
Church
Glenure Road SE9
on Wed 25th August
from 5.30 to 7.30pm
Beginners and new
players welcome!

Call Richard on 07939 027048
or email greenwich-chessgroup@hotmail.co.uk
For children from 6 years old

**NEW CLUB
OPEN SOON!!**

LONDON BOROUGH OF GREENWICH The Greenwich (Waiting and Loading Restriction) (Amendment No. 4) Order 2010

1. NOTICE IS HEREBY GIVEN that Greenwich Borough Council proposes to make the above-mentioned Order under sections 6 and 124 of and Part IV of Schedule 9 to the Road Traffic Regulation Act 1984, as amended.
2. The general effect of the Order would be to introduce double yellow line "at any time" waiting restrictions on the south-east side of Whinchat Road:
 - (a) from a point opposite the common boundary of Nos. 123 and 124 Whinchat Road south-westward for a distance of 10 metres; and
 - (b) from a point opposite the common boundary of Nos. 141 and 142 Whinchat Road north-eastward for a distance of 26.5 metres.
3. A copy of the proposed Order and other documents giving more detailed particulars of the Order are available for inspection during normal office hours until the end of six weeks from the date on which the Order is made or, as the case may be, the Council decides not to make the Order, at the Directorate of Regeneration, Enterprise and Skills, Strategic Transportation, Greenwich Council, Crown Building, 48 Woolwich New Road, SE18 6HQ.
4. Further information may be obtained by telephoning Strategic Transportation on 020 8821 6024.
5. Any person who wishes to object to or make other representations about the proposed Order should send a statement in writing, specifying the grounds on which any objection is made, to the Council's agents: Traffic Orders Team, Project Centre, 146 St Cross Street, London, EC1M 6BA (quoting reference PCL/TMO/PT/10143), to arrive by 31st August 2010.
6. Persons objecting to the proposed Order should be aware that, in view of the Local Government (Access to Information) Act 1985, this Council would be legally obliged to make any comments received in response to this notice open to public inspection.

Assistant Director, Strategic Transportation
Crown Building
48 Woolwich New Road
SE18 6HQ

Dated 10th August 2010
Approved by: *[Signature]*

Greenwich Council

Our 2012 wish list

GETTING long-term benefits from the 2012 Games is what's important to Londoners.

That's the result of the latest YouGov survey, which has found that 63 per cent are pleased that the fixture will be taking place in the capital.

That figure goes up to 67 per cent in the five Olympic boroughs.

Despite worries about the current economic climate, 93 per cent of Londoners feel that there will be long term benefits.

A total of 70 per cent said they'd like the legacy to include better transport links.

More than half of those questioned also want more jobs afterwards, along with better access to quality sporting facilities, more things for young people to do, and more people getting involved in

Long-term benefits of Games most important

some kind of physical activity.

The five Olympic boroughs are working to achieve those aims - anything from launching new walking and cycling programmes to providing new training and job-search support. Greenwich Council has invested £5 million in its parks and open spaces.

Greenwich Council Leader Chris Roberts is also the London Councils' Executive Member for Culture, Tourism and 2012.

He said: "It is clear that the long-term benefits are what really matter to Londoners."

He added: "Considering Londoners are paying £625 million through council tax

towards the Games and the infrastructure needed to deliver it - effectively making them the largest sponsor- they are right to expect some return on their investment."

He said: "Delivering on their expectations in the current economic climate will be tough."

"Fortunately London's boroughs are already delivering benefits to communities across the capital - from better access to sporting facilities to job brokerage schemes to help more residents find employment."

"With two years to go, the Games are a once in a generation opportunity to deliver something very special for

Londoners - we will continue to do our best alongside our partners to deliver the improvements their support deserves."

YouGov spent three days surveying a sample total of 1,132 Londoners aged over 18 online.

● For examples of how boroughs are creating lasting benefits from the Games visit www.londoncouncils.gov.uk/2012localbenefits

They include Greenwich Council's local labour and business scheme (GLLaB) which is working closely with local businesses to maximise their business and employment opportunities.

London Borough of Greenwich Town & Country Planning Act 1990 (AS AMENDED) Town and Country Planning (General Development Procedure) Order 1995 (AS AMENDED) Planning (Listed Buildings & Conservation Areas) Act 1990 (AS AMENDED) Planning (Listed Buildings & Conservation Areas) Regulations 1990 (AS AMENDED)

Notice is hereby given that application(s) have been made to The London Borough of Greenwich in respect of the under mentioned premises/sites. You can see the submissions and any plans during the hours of 9.00am to 4.30pm Monday to Thursday and 9.00am to 4.00pm on Fridays at -

Development Planning, Crown Building 5th Floor, 48 Woolwich New Road, London SE18 6HQ

or at the library shown between normal opening hours.

If development proposals affect Conservation Areas and/or Statutorily Listed Buildings under of the Planning (Listed Building and Conservation Area) Act 1990 (As Amended) this will be shown within the item below.

Anyone who wishes to comment on these applications should be made in writing to Development Planning within 21 days of the date of this notice.

Please quote the appropriate reference number.

Date: 11/08/2010

Steve Pallett - Chief Planning Officer

Publicity For Planning Applications

Applicant: LAND TO THE WEST OF THE O2 (KNOWN AS PLOT NO001), GREENWICH PENINSULA, GREENWICH SE10	10/0140/F	Applicant: Mr S Hall	10/1957/F
Development: Development of a 21 storey, 452 bed hotel (maximum height of 18 metres) with ancillary accommodation including health spa, ballrooms, special events space and meeting facilities plus a 23 storey building (maximum height of 92.7 metres) with 100 serviced residential apartments, together with associated underground parking, servicing and landscaping. SECOND RECONSULTATION		47 BLISSETT STREET, GREENWICH, LONDON, SE10 8UP	
Drawing Numbers: Design and Access Statement Volume 1, Design and Access Statement Addendum, Planning Addendum July 2010, Revised Application Drawings, Area Schedule & CGIs July 2010 (including updated list of drawings), Planning Statement, Environmental Report, Environmental Report Addendum July 2010, Sustainability Statement, BREEAM and Code for Sustainable Homes, Statement of Conformity July 2010, Statement of Community Involvement, Transport Assessment, Transport Assessment Addendum 2010/Travel Plan, Building Services Energy Assessment July 2010, Consultation Responses, PAF letter dated 28 January 2010 and letters dated 15th January 2010, 29th January 2010, 6th April 2010 and 30 July 2010.		Development: Construction of a single storey side/rear wrap-around extension.	
Library: East Greenwich Library, Woolwich Road SE10 0RL		Drawing Numbers: S255-PL-01 Rev A, S255-PL-04, S255-PL-05 and Design & Access Statement.	
Conservation Area:		Library: West Greenwich Library, Greenwich High Road SE10 8BN	
Applicant: Mr Boon	10/1756/F	Conservation Area: WEST GREENWICH	
18 LUTON PLACE, GREENWICH, LONDON, SE10 8QE		Applicant: Miss Vanessa Adlard English Heritage	10/1993/F
Development: Demolition of existing single storey and part demolition of two storey rear additions. Construction of new single storey and two storey rear additions and conservatory.		THE OLD TENNIS COURTS, ELTHAM PALACE AND GARDENS, COURT YARD, ELTHAM, SE9 5QE	
Drawing Numbers: 1 Rev C, 2 Rev B, 3 Rev A, 4, 5 Rev C, 6, 7 Rev D, 9 Rev C, 10, 11 Rev B, 12 Rev B, 13, 15 Rev A, 16 Rev A, 17 Rev A, 19 Rev A, Design and Access Statement and Site Location Plan.		Development: Occasional use of temporary marquees for private functions.	
Library: West Greenwich Library, Greenwich High Road SE10 8BN		Drawing Numbers: Design & Access Statement, site plan and Notice under Article 6.	
Conservation Area: WEST GREENWICH		Library: Eltham Library, Eltham High Street SE9 2HR	
Applicant: Telefonica O2 UK	10/1904/F	Conservation Area: ELTHAM PALACE	
UNION OF MIDDLE PARK AVENUE/COURT ROAD, MOTTINGHAM, SE9		Applicant: Miss Vanessa Adlard English Heritage	10/1994/F
Development: The installation of a 12.5 metre telecommunications pole and associated equipment cabinet.		THE WALLED GARDEN, THE RANGERS HOUSE, CHESTERFIELD WALK, GREENWICH, SE10 8QX	
Drawing Numbers: 100 Rev A, 300 Rev A, 300 Rev A, 400 Rev A, Supporting Technical Information, Supplementary Information, Design and Access Statement and Declaration of Conformity.		Development: Occasional use of temporary marquees for private functions.	
Library: Eltham Library, Eltham High Street SE9 2HR		Drawing Numbers: Design & Access Statement and site plan.	
Conservation Area: ELTHAM PALACE		Library: West Greenwich Library, Greenwich High Road SE10 8BN	
Applicant: Mr Alan Hunt	10/1928/F	Conservation Area: GREENWICH PARK	
38 MYCENAE ROAD, BLACKHEATH, LONDON, SE3 7SG		Applicant: Mrs Jill Davies	10/2001/F
Development: Installation of two rear dormer windows.		40A ROYAL HILL, GREENWICH, LONDON, SE10 8RF	
Drawing Numbers: Allocated No. 1, 2, 3, 4, 5, 6, 7, 8, 9, Design & Access Statement, Sheet 1, 2, 3 (photo's) and site plan.		Development: Change of use from office use (B1) to a 3-bed dwelling house including construction of a first floor extension, new roof, windows and doors (adjacent to Grade 2 Listed Buildings) (Resubmission).	
Library: Blackheath Library, Old Dover Road, Blackheath, SE3 7ET		Drawing Numbers: 40RH1001, 02, 03, 04, 05, 06, 07, 08, 09, 10, Roadside, BRE Daylight & Sunlight Report, Design & Access Statement and site plan.	
Conservation Area: WESTCOMBE PARK		Library: West Greenwich Library, Greenwich High Road SE10 8BN	
Applicant: Directorate of Children Services, London Borough of Greenwich	10/1929/F	Conservation Area: WEST GREENWICH	
PLUMSTEAD MANOR SCHOOL, OLD MILL ROAD, PLUMSTEAD, LONDON, SE18 1QG		Applicant: Erinvale Properties Limited	10/2004/F
Development: Refurbishment of existing school buildings, erection of two one-storey enclosures to house an electrical substation, LV switch room, sprinkler tank, pump room and provision of two new brick lift shafts. (Revised Application)		DRAKE COURT, 17 BROOKLANDS PARK, BLACKHEATH, LONDON, SE3 9BN	
Drawing Numbers: 060-110 Rev D, 1120 SP AL(2-1) 061E, 003A 003A, 004A, 005A, 1120P101, P102, P103, P104, P105, P106, P107, P108, P109, P112, P116, P117, P118, P119, P120, P121A, P122A, P123A, P124A, P125, P126, P127, P128, P129, P130, P131, P132, P133, P134, P135, P136, P137, P138, P139, P140, P141, P142, P143, P144, P145, P146, P147, P148, P149, P150, P151, P152, P153, P154, P155, P156, P157, P158B, P159D, P160C, P161E, P162C, P163C, P164C, P165C, P166C, P167, P168, P169A, P170, P171, P172, P173, P174, P175A, P176A, P177, P178, Refurbishment Design and Access Statement and letter dated 30.7.10.		Development: Construction of 2x5-bed detached dwellings, associated car parking and access onto Brooklands Park. Demolition of part side extension to Drake Court approved Conservation Area Consent date 23/12/09 ref: 08/24011/C.	
Library: Plumstead Library, Plumstead High Street SE18 1JL		Drawing Numbers: 3271 PD 20 Rev E, 21 Rev C, 22 Rev C, Arboricultural Report and Design and Access Statement.	
Conservation Area: PLUMSTEAD COMMON		Library: Eltham Library, 2 Archery Road SE9 1HR	
		Conservation Area: BLACKHEATH PARK	
		Publicity for Listed Building Consent	10/1438/L
		Applicant: Greenwich School of Management	
		MERIDIAN HOUSE, ROYAL HILL, GREENWICH, LONDON, SE10 8RG	
		Development: Installation of fourteen a/c units within rear courtyard (Retrospective).	
		Drawing Numbers: 01, Allocated Drawing Number 001, Doc L 2 Photographs, letter dated 19/05/2010, Design and Access Statement and Site Location Plan.	
		Library: West Greenwich Library, Greenwich High Road SE10 8BN	
		Conservation Area: WEST GREENWICH	
		Listed Building: Grade 2	
		Publicity for Conservation Area Consent	10/1757/C
		Applicant: Mr Boon	
		18 LUTON PLACE, GREENWICH, LONDON, SE10 8QE	
		Development: Demolition of existing single storey and part demolition of two storey rear additions. Construction of new single storey and two storey rear additions and conservatory.	
		Drawing Numbers: 1 Rev C, 2 Rev B, 3 Rev A, 4, 5 Rev B, 6, 7 Rev D, 9 Rev C, 10, 11 Rev B, 12 Rev B, 13, 15 Rev A, 16 Rev A, 17 Rev A, 19 Rev A, Design and Access Statement and Site Location Plan.	
		Library: West Greenwich Library, Greenwich High Road SE10 8BN	
		Conservation Area: WEST GREENWICH	

Hang out with us

Get on course for learning with fun

by Dick
Townsend-Smith

WRITING and performing plays, gaining a life-saving qualification, producing a TV programme, and putting on a catwalk show.

These and dozens of other exciting activities are on offer to young people in the borough this summer.

And the big message from teenagers already taking part is: "Don't just hang around doing nothing – get involved, have fun, make new friends and learn new skills."

This year's Summer Uni programme still has places available. Courses include trampolining at the Charlotte Turner Centre, and training for an FA Level 1 Coaching Certificate at Charlton Athletic. You can apply online at www.futureveristy.org or call 020 8921 8438 /8282.

Seventeen-year-olds Erika and Sophie from Greenwich have been working for a National Pool Lifeguard Qualification at the Eltham Centre on a Greenwich Leisure Ltd course, which includes a job interview with GLL afterwards. "We both teach young children to swim, and this will make us feel more confident if something goes wrong," Erika told GT.

Fashion-conscious Amber, 13, Bliss, 14, and Nerice, 15, have been designing outfits on a course at the YMCA in Woolwich.

"We would be at home without much to do if we weren't here," they said. "Here, we do research for homework and are planning a catwalk show."

Leanne, 15, from Eltham, is part of a group putting together a Big Brother-style programme, using the YMCA as a backdrop.

They are writing the script, filming, directing, handling the sound and lighting, and editing. "It's a lot of fun and



GETTING INVOLVED: young people are learning a range of new skills including fashion design, first aid and film production



I'd like to do it for a career," she said. And Reece, 15, from Charlton encouraged more young people to join him in the Positive Hype drama group next door. "People should get involved with groups like this and get active rather than doing nothing," he said.

The Parks Programme for 13-

19 year olds, covers 10 parks each week, and includes the Vertical Reality climbing wall, fun inflatables, DJ & MC Academy Base Station, fashion design, Arts in the Park by Skooch arts, a wide range of sports, information and advice sessions for young people, and the IYSS Techno Vans.

During August the Team Extreme professional BMXers and skateboarders will be running workshops and demonstrations at local skate and BMX tracks.

• **There's lots going on** throughout the year. Get details about what's on offer at www.greenwich.gov.uk/teenagers

Just the ticket to O2 VIP suite

GREENWICH CARD holders can buy tickets to the best seats in the house at The O2 arena.

Tickets for Greenwich Council's VIP suite are available to cardholders thanks to a special agreement between the council and AEG who run The O2. The suite offers great views of the arena and has just 15 seats. It includes a lounge area with sofas, a small dance floor and a bar plus an attendant on hand to take orders for food and drinks.

It means cardholders can enjoy the VIP experience for particular shows by paying just 10 per cent above the top ticket price for a seat in the arena. It's also a great offer for businesses which can buy a Corporate GreenwichCard to reward staff or entertain clients by buying all 15 seats.

As GT went to press VIP tickets went on sale for Roger Waters, Linkin Park, Eddie Kadi and Plan B.

At the same time tickets to Disney on Ice have been reduced to make them more affordable for families.

The suite ticket sales means there is no cost for the suite to the council which can present free tickets to local charities and community groups

• Find out more about the suite and which tickets are for sale at www.greenwich.gov.uk/greenwichcard Buy or renew your GreenwichCard for £2 or £1 concessions at any leisure centre.

Notice of Application for a Premises Licence Licensing Act 2003

Notice is given that **MARSALA COTTAGE LIMITED** has applied for the grant of a Premises Licence for the following premises:

**86 ELTHAM HIGH STREET
ELTHAM
LONDON
SE9 1BW**

A record of this application may be inspected by appointment at: Trading Standards Department, Riverside House, Woolwich High Street, London SE18 6DN (telephone number 020 8921 8018).

Interested parties may make representations to the Council on this application by no later than **1st September 2010**. All representations must be made in writing. Representations can only be made on the grounds of one of the four licensing objectives, namely:

- Protection of children from harm
- Public nuisance
- Prevention of crime and disorder
- Public safety

Any person who makes a false statement in connection with an application is liable on summary conviction to a maximum fine of £5,000.

It is proposed that the following licensable activities will take place at the premises:

Recorded Music 11:00 hrs to 01:00 hrs
Sale & Supply of Alcohol 11:00 hrs to 01:00 hrs
Late Night Refreshment 23:00 to 01:00

Award for long-serving TA reservist

A Territorial Army reservist from Blackheath has received a long service medal. Lieutenant Colonel Sarah Phillips has been awarded the Volunteer Reserves Service Medal in recognition of her long and efficient service. Lt Col Phillips, 49, a consultant orthopedic surgeon at King's College Hospital in Denmark Hill, has been a member of the Territorial Army for 25 years. She is based at the headquarters of 256 (City of

London) Field Hospital (Volunteers) in Braganza Street, Kennington. In March 2003 she was mobilised to Iraq with 202 Field Hospital (Volunteers) and in 2007 she was appointed as Unit Second-in-Command and continued in this post until April 2010. During the unit's mobilisation to Afghanistan she took on the key role of Officer Commanding Rear Party with more than 90 members of the unit, deployed in the



UPLIFTED: Sarah with her medal

hospital in Camp Bastion. The presentation was made at a special reception at Kingston Guildhall. "I'm

very honoured to receive my long service medal at such a wonderful event," she said. "It's been a very enjoyable and uplifting day with such a great response from the general public – it makes what we do so worthwhile."

As well as health professionals, members of Sarah's unit include drivers, chefs, radio operators, electricians and other trades people. Visit www.armyjobs.mod.uk for more information.

Breathing down your neck

by Pat Greenwood

PAT Taylor's weekly calendar would take your breath away! Breath, meanwhile, is something Eltham pensioner, Pat, has always been short of – ever since TB damaged one of her lungs at the age of 18.

"I keep going, and a lot of it is what you do for yourself," said Pat, regular exerciser and swimmer, who is also one of Greenwich Council's Walk Leaders, as well as being on the borough's 'Breathe Easy' support group, and on Eltham South Housing Panel.

"The more exercise you can do, the more you get good air into your lungs."

Pat and her friends are promoting the British Lung Foundation's new campaign to ban smoking in cars when young people are around. Last month, the Royal College of Physicians announced that there are 22,600 new cases of asthma and wheezing in the UK's children each year – because of passive smoking. "Also, I wish people would use a hanky when they are coughing and sneezing," said Pat. "My TB was diagnosed out of the blue when the X-ray van came round to my secretarial college. It's very contagious, and, although I'd been a keen runner and a high-jumper before, it permanently weakened my chest."

She and more than two-dozen others

Me & my borough

like her are keen regulars at 'Breathe Easy', which works closely with both local NHS specialists and with the British Lung Foundation.

Around 15,000 people in the borough fight for breath as a result of conditions such as emphysema, chronic bronchitis and asthma.

Pat's diary has got especially breath-taking ever since she attended a free course for improving the lives of people with long-term health conditions called 'The Expert Patients Programme'.

"My GP recommended it, and it's well worth asking your surgery about it," said Pat.

"He wanted to get me out of the house after my husband, Alan, died and it was one-day-a-week for six weeks. They got you to write down what activities you were planning to do in the next week, how far you planned to walk, things like that.

"The real beauty of it is you get to meet other people, and, when the course was over, we'd continue to meet for lunch. I've kept in touch with everyone since 2006."

She's recently done her fourth 'Race for Life' – for Cancer Research – on Blackheath. "And the most amazing

thing is all the countless young people who get out of their beds to join in," she told us.

She loves both gym and swimming at the council's Eltham Centre in Archery Road, as well as a 'Wellness' club session on Tuesday lunchtimes at The Waterfront leisure centre in Woolwich.

"I can't speak too highly of Greenwich Council. They don't leave the older people out.

"Also, this borough it's absolutely wonderful historically. Finding all the new places on our walks never ceases to amaze me. I also wish more people of all ages would go along to the housing panels to support their representatives – rather than expecting other people to do things for them." The only thing she'd like to see – cuts permitting – is more benches around, especially half-way up hills, to take a breather!

"I was working for 40 years, but your life doesn't stop when you retire. It's the beginning of a new era.

"The only thing you must remember to do is set aside some 'Me time' in the week!"

The Breathe Easy support-group is having a break in August, but it generally meets on the last Friday of each month from 11am at Hider Court sheltered housing scheme at 120 Hervey Road, Charlton, and new members are always welcome.

If you're coping with a long-term health condition, look at www.expertpatients.co.uk



ALWAYS ON THE GO: Pat takes an indoor jaunt on her cycling machine

Create your own rocking family portrait this summer at the British Music Experience at The O₂

From now until 4th September*
Wednesday – Saturday
2pm – 4pm

PLUS check out all the other amazing workshops
www.britishmusicexperience.com/summer-holidays

FAMILY ROCK ALBUM

Pre-book tickets online and children pay only £5!
Under 5's go free! Adult £15 Under 16's £12

* Excluding 11th, 12th, 13th and 14th August. Exhibition open as usual



Together with



gettyimages



The British Music Experience is a registered not-for-profit charity. Registered Charity No. 1125752



Best in west

Facelift revives historic centre

by Pat Greenwood

TRAINEE decorators have removed years of pollution from a grand old borough landmark.

And now Greenwich West Community & Arts Centre in West Greenwich House on Greenwich High Road is back to its original yellow London brick!

The transformation is the result of a brand new link-up between the centre's management committee and Adcris C.I.C, a south London company which trains and supports jobless 18 to 24-year-olds.

The community centre paid for the scaffolding and the paint and offered plenty of cuppas. The company provided the trainees, backed by the government's Future Jobs Fund.

Centre director Brian Blease told GT: "For an outlay of just under £5,000, we reckon we've had about £20,000-worth of free labour!"

Adcris, which has almost 200 employees, set up in November, 2009, and is always on the look-out for community centres, voluntary group premises and social housing schemes in need of painting, decorating and general repairs.

Brian said: "The team of workers - Alex, Ricky, Thomas, Corey and Ben - arrived with their supervisor, Lee Cooper, about six weeks ago. Faced with well over 100 years of pollution - and war



BLAST FROM THE PAST: left West Greenwich House as it was, above the well-known door number gets a spruce up, below, the team of decorators who helped out



damage too - they tried, unsuccessfully, to clean the brick

with jet wash and with chemicals. "They had to scrape the building clean. It was almost like sanding it down. Then they've filled in all sorts of gaps, re-shaped bits of cornices, and filled and re-painted our sash windows."

Brian says the centre is in the middle of a major regeneration area, "We're now surrounded by some very posh buildings, so it's great not to look scruffy any more. Our aim is to offer the best possible facilities that we can to the public."

One hundred and seventy organisations use the community centre - from under-fives "Bopping

Bunnies" to silver surfer computer groups - averaging around 1,800 people a week, and starter-groups are able to rent a small room for a nominal fee.

Adcris supervisor Lee Cooper told GT: "In the last six months, these trainees have all improved in various aspects of building-work. They get paid, we help them with their CVs, and we also give them a portfolio of their progress on a CD. They have all gone through the necessary checks, too, if anyone is looking for labour."

Alex Awoyemi, 24, told us: "My wife, Kandice, is studying Property Development at Uni - so, hopefully, I can put my skills together with her knowledge."

The former youth worker added: "I really hope the government can keep schemes like this one going. Young people like to use their hands in this way, and, after six months, the building trade is my Number 1 focus!"

Ben Macaulay, 21, said: "I heard about this through my jobcentre. I'd done some work with my dad, who is a painter and decorator. Going up and down this scaffolding has been the most challenging! I'm hoping for a good reference for my portfolio."

• West Greenwich House, the Greenwich District Board of Works Offices from 1876, became the town hall for the old Metropolitan Borough of Greenwich until World War Two. Find out more about the community centre and how you can get involved by visiting www.greenwichwest.org.uk



Borough BRIEFS

Tarn Friends need your help

TEA in The Tarn on the last Sunday in July included two performances from the Bob Hope Theatre during the afternoon. The event, part of the borough's summer fun in the parks programme, was funded by Greenwich Council. The Friends are busy planting donated seeds, cuttings and plants to give colour throughout the year. Volunteers are welcome on Thursdays, and on the third Saturday of the month. They're also looking for a volunteer plumber so they can improve the toilets. Contact info@thetarn.org or visit www.thetarn.org

OBSERVATORY HOLIDAY FUN

CHILDREN aged three to seven can help Halley the Space Probe choose a planet for his summer holiday at the Royal Observatory, Greenwich Park. The free 'Halley's Holiday' exhibition in the Astronomy Centre will guide younger visitors around the planets of our solar system.

Children are invited to meet in the Meridian Courtyard on Saturdays for sessions at 1pm, 2pm and 3pm to hear about the world-changing discoveries in time and navigation made at the Royal Observatory. Full details www.nmm.ac.uk or phone 020-8858 4422.

New to the Area!

CHUMMYS
Of Folkstone

Family Business Established Over 50 Years

**FAMOUS FOR
FRESH SHELLFISH**
NOW OUTSIDE THE ALBION PUB
**48 Woolwich Church
Street, SE18 5NN**
**FRIDAY, SATURDAY
& SUNDAY**

www.chummys.co.uk

Tony:

07813 173 602

GET ACTIVE

Silver jubilee invitation

Join rugby club for 25th anniversary

GREENWICH Rugby Club has been in the heart of Plumstead Common for over 20 years winning local leagues on several occasions. Our 25th anniversary is coming up next year and you'd be more than welcome whether you've played before or are new to the game. We train on Wednesday evening from 7pm with our coach. He

can deal with experienced players to take you on to a higher level or teach the game to newcomers. We are opposite the Old Mill pub in Plumstead, 10 minutes from Plumstead station. Although we take our rugby very seriously we have fun with the end-of-season favourites - our Sevens competition and Old vs Bold when our

older players play the under 25s. We also have comedy nights and other social events during the year. We are competitive but we believe rugby should be fun. Come and join us any Wednesday for a taste of the great game. For further information please phone Nick on 07860 609796, visit www.greenwich-rfc.com or just turn up.

ON THE BALL: club members enjoy a fun but competitive game



salsa • merengue • belly dance • cumbia • reggaeton • soca • calypso • african • cha cha • flamenco •

Come and join the party!

ZUMBA
FIRE

Zumba is the latest dance aerobic fitness craze which has taken the nation by storm!

My classes are for mixed abilities and are in your area. Eltham, New Eltham, Sidcup, please refer to my website for more classes and more info www.zumbawithseniha.com

Or call 07891 941 144 or email zumbawithseniha@gmail.com

salsa • merengue • belly dance • cumbia • reggaeton • soca • calypso • african • cha cha • flamenco •

fitness sport-karate freestyle-kickboxing self-defence

1 MONTH FREE TRAINING & TUITION

- Fun & Motivational, with 2 classes never the same
- Most effective form of weight loss
- Learn to defend yourself
- Great for overall fitness
- Affordable & cost effective
- Friendly & welcoming
- Develop flexibility, stamina & confidence

Beginners classes now enrolling for Children, Adults, Fitness & Women Only

FREE 1st Lesson
Call Now 07841 775 868

Taught by World Champion Jamie Wood

Classes available for all the family, regardless of ability

www.pyramidmartialarts.com

Unit 0, 1st floor, Harrington Way, London SE18 5NR
(just off Warspite Road near the Thames Barrier)

FREE PARKING AVAILABLE

pyramid martial arts

Play Rugby with Greenwich RFC

All abilities welcome!

Phone: 020 8355 0019
or contact us via our website
www.greenwich-rfc.co.uk

Greenwich RFC, The Pavilion, Old Mill Road, Plumstead, London SE18 1QG

ESP Effective Self Protection

ESP is the self protection system developed and employed by DEFEND International Ltd. Its origins evolve from self defence systems used by Military and Police Forces in the UK and throughout the rest of the world. ESP is taught by fully qualified unarmed combat and physical intervention instructors who are currently serving members of the British Army and UK Police.

Classes

- Personal/Individual training
- Group Self Defence
- Kids Stay Safe & Anti Bullying
- Ladies' Self Protection
- School visits and Open Days

If you can't make it to our classes we can arrange an introductory class or Seminar at a venue of your choice.

For further information on ESP classes, locations and timings

Contact 0770 2832430 or 0208 8563056
All of our instructors are standard or enhanced CRB disclosed.



FRIENDLY CHAT: haulier Paul Knight, left, talks to an enforcement officer, below John Whitmore welcomed the latest information

War on waste

Operations crack down on rogue carriers

by Pat Greenwood

FLYTIPPERS beware! Major new stop-and-quiz operations between Greenwich and Bexley Councils and local police are flushing out rogue lorry, truck and van drivers in the waste-carrying business.

The Automatic Number-Plate Recognition (APNR) vehicle is also on hand to check whether passing drivers have all the necessary tax and insurance.

GT was invited to one of the special operations, along Harrow Manor Way on the flyover above Abbey Wood Station.

More than 100 drivers were stopped within the two hours by police, and then town hall enforcement officers checked to see if they had the relevant documents – or handed out information packs – as appropriate.

GT saw:

- The driver of an open-backed truck who tried to do a U-turn and escape the cordon pursued and brought back by police. The man, who told officers he had been in the business for over four years, was subsequently given a £300 fine for not having a waste carriers licence.

- Another open-backed truck driver fined £30 for an insecure load (It's a £60 fine and three points on your licence for a second offence) All in all, four fixed penalty notices were issued on the day.

- Another culprit found to be transporting waste in a vehicle he wasn't registered to drive

- Other commercial vehicles pulled over, to have their loads checked and to be given a

comprehensive waste-transportation guide and dummy licence application-form, as appropriate.

- A car-driver with two child-passengers not displaying a current tax disc. She then rang her husband who told her it was in the glove-pocket.

Similar operations are continuing throughout the year at certain key locations in the borough, paid for from a special government fund.

The first session of its kind this summer - on Western Way, near Plumstead Bus Garage - saw 106 vehicles screened and stopped within two hours. Four vehicles were seized from illegal drivers during this operation.

Police Sergeant Eddie Tindall from the South East area ANPR team told GT: "Previously we were averaging about two or three operations a month, working with Greenwich Council around untaxed and abandoned



vehicles.

"Now, with the council taking a further lead, we're developing another good cross-over in partnership. Not only does it help to educate people about waste-transportation, the high-visibility police presence helps to disrupt unlawful behaviour."

Paul Knight runs a removals and tip-clearance business with his two sons. He was able to produce all the necessary

documents when his open-topped van - carrying settees and mattresses - was checked on Harrow Manor Way.

Paul said: "I think it's very important to have operations like this not only to stop anyone operating illegally - but, very importantly, to reassure businesses and to educate them too."

John Whitmore, who runs a plumbing and heating company with a colleague and one apprentice, thought the £154 cost of the waste-transportation licence was harsh - when he already spends over £600 in fees per year taking everything from copper off-cuts to scrap paper to the relevant recycling banks across South London.

He told GT: "I don't like to see waste thrown around anywhere. It's bad for the environment. But this licence seems to me to be a bit like paying twice."

Cllr Maureen O'Mara, the cabinet member for environment and community safety said: "I welcome this new initiative on our roads."

"It's a prime example of the strong working partnership between Greenwich Council and local police."

She added "High-visibility operations such as this emphasise to hauliers and to motorists alike how important it is to have the correct documents."

- **WASTE-carrying businesses who don't have the £154 carriers' licence risk a maximum penalty of £50,000 or five years' imprisonment. Find out more by checking out www.greenwich.gov.uk and clicking on Enforcement. You can also ring the council's customer contact centre on 020-8921 4661.**



JUST CHECKING: council and police working together

MEPS & GREATER LONDON AUTHORITY MEMBERS

GREENWICH AND WOOLWICH

Nick Raynsford (Lab)

Please call 020-7219 5895 or email raynsfordn@parliament.uk

to register for a surgery or write to Nick Raynsford MP, House of Commons, London SW1A 0AA

Surgeries:

2nd Fri: 32 Woolwich Road, Greenwich, 7pm

2nd Sat: Charlton House, The Village, 11am then West Greenwich House, Greenwich High Road 2pm

4th Fri: 32 Woolwich Road, Greenwich, 7pm

4th Sat: 11am at Barnfield Project Oak House, Barnfield, Plumstead SE18 3UH

ELTHAM

Clive Eford (Lab) Call for an

appointment at the following monthly surgeries on 020-8850 5744 between 11am and 3pm Mon-Fri.

1st Tues: Anstridge Community Centre, Anstridge Rd. SE9, 11am-12.30pm

1st Fri: Horn Park Community Centre, 96 Sibthorpe Road, 11am-12.30pm

2nd Fri: Slade Hall, Pendrell Street, 6pm

2nd Sat: St Mary's Community Centre, Eltham High Street, 10am and 4th Friday of the month at 6pm.

3rd Tues: Middle Park Community Centre, 150 Middle Park Avenue, 11am-12.30pm

3rd Fri: Coldharbour Neighbourhood office, library entrance, William Barefoot Drive, 11am.

4th Sat: Shrewsbury House, 10am, Bushmoor Crescent

ERITH & THAMESMEAD

Teresa Pearce (Lab)

All surgeries are booked by appointment by calling 020 7219 7068 or write to Teresa Pearce MP, House of Commons, London, SW1A 0AA, or email teresa.pearce.mp@parliament.uk

Four advice surgeries each month: the 1st Saturday of the month in Thamesmead, the 2nd Saturday of the month in Erith, the 3rd Friday of the month in Northumberland Heath and the 4th Friday of the month in Abbey Wood.

GLA MEMBER

Len Duval (Lab) is the GLA member for Greenwich and Lewisham. Please write to Len Duval, GLA, City Hall, Queen's Walk, London SE1 2AA; phone 020-7983 4408/4517; or email len.duval@london.gov.uk

EUROPEAN PARLIAMENT

Contact your MEP at the UK Office of the European Parliament on 020-7227 4300.

COUNCIL MEETINGS

THE following meetings are taking place over the next few days in the Town Hall, Wellington Street (unless otherwise stated).

Aug 11 - Greenwich Area Planning committee, 6.30pm

Aug 12 - Licensing sub committee B, 3pm

Aug 16 - Licensing sub committee A, 3pm

Aug 18 - General Purposes, 6.15pm

Licensing Review sub committee, 6.30pm

Aug 25 - Licensing sub committee B, 5pm.

More information on 020-8921 5130 or www.greenwich.gov.uk/meetings

CLASSIFIEDS

BUILDING AND PROPERTY MAINTENANCE

ALLTYPE PAVING
Your Local Company

SPECIALISTS IN
BLOCK PAVING,
IMPRINTED CONCRETE,
SLABBING, FENCING,
ALL BRICKWORK.
NO DEPOSIT
REQUIRED



ESTABLISHED - HONORABLE REPUTATION - HIGHLY RECOMMENDED
All Work Carried Out 10 Year Guarantee
FREEPHONE: 0800 988 3386 (2 days a week)
30 Wilson Road, Sanderstead CR8 3HL

AJB Electrical
All installations undertaken
Quick Reliable Service
Guaranteed
No Job Too Small



020 8694 9924
07860 770 643

Gas & Plumbing Services
Solar Hot Water System
50-70% free hot water yearly
Boiler breakdown, Service,
Landlord gas Certs,
Central heating repairs,
Gas boiler installation
07526 694 738
020 8539 6346
www.futureheating.co.uk

V & C GARDENERS
LANDSCAPING,
RE-TURFING,
GARDEN CLEARANCE,
FENCING
O.A.P 50% OFF
FREE QUOTES
020 8851 3904
07985 608 225

KEVIN REDMOND
PLASTERING CONTRACTORS
27 years experience in
rendering, plastering,
pebble-dashing & damp
proofing **FREE ESTIMATES**
020 8325 0793
07979 866 595

GR PLASTERING
All aspects of plastering
undertaken. Over 20
years experience. Fully
insured.
Free estimate.
020 8859 1184
07534 194 878

SOUTHERN BRICKWORK
Specialists in garden walls,
paths and patios.
For a competitive price and
guaranteed satisfaction call
Graham
020 8291 3601
07549 639967

Ace Landscapes
Wild Gardens Tamed.
Fences, New repairs, All
Tree Work, Sheds, Paving
0208 355 0371
07774 588 742

MF PLASTERING BUILDING SERVICES
SPECIALISTS IN
PLASTERING,
RENDERING, SCREEDING,
ALL BUILDING
WORK UNDERTAKEN
FREE ESTIMATES
07749 432 767
mfpbs@hotmail.com

TONYSDIY.COM
DECORATING, INTERIOR DECOR
(CITY & GUILDS)
PLASTERING, SHELVING, FLAT PACKS,
FLOOR-LAYING, ELECTRICAL - PART P,
PLUMBING, TILING, KITCHEN &
BATHROOMS, GARDEN & MAINTENANCE.
CAR REPAIRS SERVICE.

0208 856 9398
07961 540 836



Boilers R Us
Visit Our Showroom
344 Footscray Road SE9 3EF
0200 ONE 4 over 40
Written Quotes Boilers

COMBI DEALS
Save up to 40% on your Gas Boiler
Replacing an Existing One

Boiler/Boiler 18 KW	£990
Boiler/Boiler 24 KW	£1,170
Boiler/Boiler 28 KW	£1,200
Boiler/Boiler 34 KW	£1,280
Boiler/Boiler 38 KW	£1,280
Boiler/Boiler 44 KW	£1,350
Boiler/Boiler 48 KW	£1,350
Boiler/Boiler 54 KW	£1,350
Boiler/Boiler 60 KW	£1,450

Supplied & fitted with up to 5 years parts & labour warranty. Silver colour available on request.

Landlord Gas Safety & Boiler Servicing from £50

GAS, OIL & LPG
FREE QUOTATIONS ON BOILER REPLACEMENTS OR FULL SYSTEMS
Call on 020 8290 3530
Free Phone 0800 328 0560

D H PLUMBING & HEATING SERVICES
Landlords gas safety certificate
Power flushing
All makes of boilers repaired
Central heating & boiler installation
All gas, plumbing & heating
work undertaken

020 8244 0912
07956 994 429

NEW IMAGE EST 1982
PAINTING-DECORATING-WALLPAPERING-TILING
PLASTERING-ELECTRICS

INTERIOR & EXTERIOR WORK CARRIED OUT.
DON'T HESITATE TO CALL ME FOR A
FREE NO OBLIGATION ESTIMATE

DEAN AVES
City and Guilds Qualified Painter and Decorator

Mobile: 07734 690 333 or 07722 971 333
Home: 020 8850 9932
deanaves@ntlworld.com
deanaves@yahoo.co.uk

3J PLUMBERS
Bathrooms & Kitchens, Upgrading and/or
Removing Radiators, Power Flushing.
All Aspects of plumbing Work Undertaken,
by NVQ2 Qualified Plumbers.
All Our Work is Guaranteed.
Please call Leslie on
07964 788 848
3jplumbers@gmail.com

TO ADVERTISE YOUR BUSINESS HERE
CALL GAYNOR 0208 921 5033

WILSON'S WOOD & CARPENTRY SOLUTIONS
All carpentry &
Joinery. Kitchen
& Bathroom
refurbishment
020 8852 2343
07738 002 844

LAUNDERETTE
GREENWICH LAUNDERETTE
174 TRAFALGAR ROAD SE10 9TZ
Ironing shirts, Trousers, Bedding, Suits etc
Industrial & Home Laundry Undertaken
COLLECTION & DELIVERIES WELCOME
Open Seven days a week
8am to 8pm. Last wash 7pm
0208 858 6937 **07916 123 483**

HEALTH & BEAUTY
TERRI'S NAIL & BEAUTY COURSES
Most profitable business
Over 20 years experience
in teaching.
Guaranteed qualification.
For more info ring or text
07904 259 460

PAMPER PARTIES
Truly Scrumptious Pamper Parties
For Princesses of all ages
Mini Manicures (nail art) Mini Pedicures (nail art)
Mini facials, Party Bags, Hair Glitter.
Fully qualified Beauty therapist & Nanny
CRB checked & Insured
07932 010 899 / 020 8425 1553
www.trulyscrumptiouspamperparties.com
lisascott@windowslive.com

PC REPAIRS
PC PROBLEMS?

- PC UPGRADES & REPAIRS
- BUY & SELL PCs
- SETUP HOME OFFICE
- WEB SITES & WEB HOSTING

Call Peter
07501 512997 or 0208 856 8168

iconek www.iconek.com
Professional & friendly computer services
for home and small businesses including:

- PC repairs and upgrades
- Wireless and wired networks
- Virus and spyware removal

All of our services are offered on a no fix no fee
basis and we don't have call out charges.

Contact us on:
020 8312 9966 **07791 997 292**

REMOVALS

DON'S REMOVAL FIRM
• Nationwide
• Quick & reliable
• Short notice
• DSS Welcome
07951 021 629
020 8765 9244

GOODS WANTED

J's Budget Appliances wanted
Washing Machines
Cookers Fridges
Freezers
Top Prices Paid
Bought & Sold
07538 863 958
0208 473 0060

Help your Mums and Dads' Pensioners Charity
Donate useable Furniture
Free Collections • Home Removals
Free Estimates
Ring DAGE on **020 8691 8823**

WANTED House Clearances
Full and Part
Pine, Leather Sofas, Wardrobes,
Drawers, Dining Tables etc
Auction Service available for antiques
Rubbish also cleared
Best Prices Paid in Cash
0208 850 1357
Professional reliable service est 20 years

WANTED
Most Types of
Second Hand
Furniture Bought &
Sold
Handley's of
Woolwich
020 8854 7754

IRONING
IRONING BORED
48 Hour
Ironing Service
FREE collection/delivery
within 3 miles of SE28 8FY
www.ironingbored.net
0203 259 0009

HANDY MEN
RELIABLE HANDY MEN
Richard & Alex
Ceilings, Kitchens &
Decorating. NO JOB
TOO LARGE OR SMALL
020 8850 8411
07957 547 174

VENUES
Ricks Bar
For Hire
All occasions
Capacity 175 people
Licensed Bar 1 am
Catering available
Free Hire for 100+ Adults
020 8858 1032
07931 443970

GROUNDWORKS & DIGGERS
JD GROUNDWORKS MAN & DIGGER HIRE
Drive ways & Patio's Block
Paving Concreting Brick Work
Fencing Drainage
Free Estimates
07723 463 931

020 8921 5033

**gaynor.granger@
greenwich.gov.uk**

APPLIANCES

APPLIANCE DOC

- Washing machines, electric cookers, tumble dryers repaired and installed
- Low rates, No call out charge
- 7 Day Service

**020 8317 1264
07850 330 501**

ROOFING

EASTWOODS ROOFING

All kinds of Roof Gutters & Chimney Repairs
Small family Business

**020 8635 0049
07747 786 076**

DECORATING

fresh

Professional Decorators

Interior & Exterior,
Paper Hanging,
Painting & Decorating,
Clean & Reliable.

Call Gary
020 7640 9538
078 7881 2075

SKIP HIRE

JOYSKIPS

- FAST & RELIABLE SERVICE
- 6 DAYS A WEEK • ALL SIZES
- WAIT & LOAD SERVICE
- COMPETITIVE PRICES

SAME DAY PICK UP'S AVAILABLE
020 8852 8289 020 8698 8000

VISA Local Authority Approved MasterCard

Toulouse Skips

Unbeatable Prices & Services

0208 305 9641

Grab & Tipper Hire

ROOFING

SOUTH EAST ROOFING & BUILDING SERVICE Ltd

For all your Roofing and Building needs
CALL FOR A NON-OBLIGATION QUOTE

0800 612 9416

www.seroofingandbuilding.co.uk

BLINDS & SHUTTERS

TUDOR blinds

Specialist retailer of made to measure blinds and plantation shutters

020 8319 4444

www.tudor-blinds.co.uk
26 The Village, Chertsey SE7 8UD

EASY-LOAD

"2 HOUR DELIVERY OR EXCHANGE SERVICE"

SPECIAL OFFER Permits Arranged 4yd 6yd 8yd 12yd

SE2 / SE3 / SE4 / SE5 / SE7 / SE9 SE10 / SE12 / SE13 / SE18 / SE28
Welling / Sidcup / Belvedere / Erith / Bechtelheath / Bechtel / Gravesend / Northfleet / Dartford
Crayford / Orpington / Petts Wood / Chislehurst / Bromley / Keston / Downham / Beckenham Sevenoaks

RING FOR QUOTE

020 8300 9090 01322 555588

TATTOO STUDIO

Monkeybiz tattoo studio

100% HYPO-ALLERGENIC INK
FREE ARTWORK

OPENING TIMES:
11AM-6PM MON-SAT
SUNDAY 10.30 APP ONLY

10% OFF WITH THIS ADVERT

PAVING

READY PAVE DRIVES & PATIOS

BLOCK PAVING,
CRAZY PAVING,
CONCRETE DRIVES, GRAVEL,
TARMAC, SLABS,
PEA SHINGLE

**OFFICE 020 8485 9211
MOBILE 07919 077 721**
Committed to Excellence

VEHICLES WANTED

R&P Car Sales

WANTED

GIVE US A CALL!!

WE BUY ALL TYPES OF VEHICLES
ANY CONDITION • ANY AREA

CALL ANYTIME **020 8659 8988** 7 DAYS A WEEK

CLASSIC & UNUSUAL CARS ALSO WANTED
ADVERTISING WEEKLY FOR OVER 15 YEARS

SCRAP CARS & VANS

Bought for cash

Best prices paid
Extra for Alloy Wheels
DVLA documents exchanged
We Do Not sell spares

07540 105 453

The appearance of an advert in GT does not mean that Greenwich Council endorses the advertiser's goods or services. While we will not knowingly run an advert that is untrue, we are not responsible for the accuracy of any advertising material or the accuracy of the description of an advertised product or service placed in GT

Schwepp-ed away by free swim offer

OLYMPIC swimmer Keri-Anne Payne urged Greenwich residents to get into the 'schwim' of things by launching a new campaign offering free swims for Londoners.

The offer follows the council's decision to extend its free swimming scheme for under 16s and over 60s until the October half-term despite the ending of government funding for the national programme last month.

The free 'schwims' are being backed by Schweppes Abbey Well, which is sponsoring the London 2012 Olympics, with support by GLL which runs 40 pools across the capital.

Keri-Anne took to the water at the Waterfront Leisure Centre to launch the initiative

last week. It offers locals a complimentary swim at the Waterfront or any of the borough's other three leisure centres from Monday to Friday.

All residents have to do is exchange their Schweppes Abbey Well 'Sch..wim cap' bottle caps at the Waterfront, Arches, Thamesmere and Eltham Centre pools.

Keri-Anne, who has high hopes for the 2012 games, offered her own specialist swimming tips and advice on technique as she launched the free swim offer. And visitors were reminded that they can join GLL Swim London to get unlimited swimming sessions for £26 a month.

"Whether you choose front crawl, breaststroke or doggy paddle, swimming is one of the



2012 HOPEFUL: Keri-Anne meets some enthusiastic swimmers at the Waterfront

best forms of exercise as it has no impact on your joints and provides a full body work out. With the Olympics drawing

ever closer there's never been a better time to get into the water which is why I'm supporting Free Schwims at

GLL operated pools," said the Olympic medallist.

GLL's swimming development manager Andrew Clark said: "Swimming is a great way to get fit and embrace a healthy and active lifestyle. GLL is delighted to be working with Schweppes Abbey Well on the Swim Free campaign.

"We hope that the initiative will encourage many Londoners to get into the water for the first time, while established swimmers will have the chance to visit a fantastic range of facilities for free."

• For further information about the Swim London membership and other GLL leisure offers visit www.gll.org

Motor-cycled

by Pat Greenwood

MOTORCYCLE-mad teenagers in Thamesmead are riding high. Six months after appearing in Greenwich Time they've landed sponsorship for sweat shirts and maintenance materials, they've been to a major international race meeting, and they're hoping to move to bigger premises by the beginning of summer 2011.

Around 100 young people are keen users of The Archway Project in Harrow Manor Way, and more are on the waiting list.

Most of them are there to lap up everything to do with motorbike mechanics and off-road racing, but there is also cookery and photography - and general encouragement from operations manager Neil Monaghan and his team to boost overall self-confidence and give them a steer towards future training and jobs.

Neil told GT: "Shortly after

who now runs a motorbike supplies firm called Touratech - a total of 14 Archway members and staff travelled 900 miles across Europe to the 'Rodeo' this year. It's "the Glastonbury of dirt-biking" up in the Austrian Alps - and they are still talking about it.

They watched the Red Bull Hare Scramble which starts when 500 of the biking elite line up at the bottom of the largest open-face mine in Europe. They also prepared questions and videoed interviews with world-class riders like the UK's Dougie Lamkin.

Rodney, 18, who is currently seeking a plumbing apprenticeship after completing a general multi-skills course in construction, told us: "I'd only ever travelled to Ghana before to visit family. When we left here at 4am, I had butterflies going through my belly, and then we were hopping the Euro-Tunnel!"

He added: "I'd love to compete out there in Austria myself, representing The Archway Project!"

Chloe, aged 17, a former pupil of Plumstead Manor School, is one of the increasing number of girl regulars at the project. She's about to start an NVQ electronics course at college, and she told us: "I heard about Archway about eight months ago, and now I've brought more friends in. I've done a full bike service, and now I'm doing some volunteering, helping out with the younger members and also in the office, where I'm learning to make bids for funding."

Jason, aged 22, from Plumstead, is able to help with the cycle maintenance from his wheelchair. The former pupil of St Paul's Academy in Wickham Lane has beaten cancer in both his neck and pelvis. He comes with his support worker Faye, and he told GT: "I'm a bike-enthusiast!"

Neil told us that, all being well, the project will be moving to double the space - complete with IT suite and bigger kitchen - just a few arches down, around next Easter.

It's all down to their landlords, Trust Thamesmead, and cash from a government initiative called My Place.

● **FOR the first time, The Archway Project will be open throughout the summer holiday this year on Tuesdays to Thursdays inclusive, 3.30pm until 6pm. Anyone aged 11 to 19 who is interested in joining the waiting list is welcome to call in. You can also visit www.archwayproject.org or ring 020-8310 1730.**

Bike-mad teens are riding



CLIMB EVERY MOUNTAIN: project youngsters work together on their Austrian trip and, right, back at base in Harrow Manor Way

'I heard about Archway about eight months ago, and now I've brought more friends in. I've done a full bike service, and now I'm doing some volunteering, helping out with the younger members'

featuring in Greenwich Time, we were contacted by Würth UK Ltd, a multinational supplier to the automotive, cargo, metal, wood and construction industries.

"We're getting a range of about 15 products from them, like grease and carb cleaner, helping us make some big savings. They also sponsored t-shirts which we wore on our trip to Austria, to the Erzberg Rodeo."

Würth UK Limited's Marketing Department said: "We are looking forward to supporting the Archway Project in the future and it is great to see the fantastic work that is done by everyone at the centre."

Helped by some additional sponsorship from former Archway member Nick Plumb -

e magicians

ng high thanks to Thamesmead project



GreenwichHomes

Greenwich Council's Choice Based Lettings Scheme

Edition 197

How the lettings policy works

Housing applicants are placed within 'Bands' according to the Council's policy for letting homes. Your band information is on the letter that the Council sent you when you registered, or when your circumstances changed.

Property adverts say which band can apply and any other criteria. When all the bids are received, the property is then offered to:

For properties advertised for band A and band B - the applicant who has had this priority status for the longest time.
For properties advertised for band C applicants - the applicant who has been registered on the Council's list for the longest time.

Band

- A** is for applicants in unsatisfactory housing, including people moving due to demolition and those underoccupying their homes.
- B** is for applicants the council must prioritise according to the law, particularly homeless people, and others with an urgent need to move for medical or welfare reasons.
- C** is for all applicants on the housing register, including those that are in priority bands A and B.

How do I apply?

1 Get on the list

First, you've got to be on the housing waiting list to join the scheme. If you're not, get an application form by phoning the Access and Allocations Section on 020 8921 2941. Or pick up a form from any neighbourhood office.

2 Find your applicant number

It will be on the letter you've already had from the Council about the new scheme. You'll need that number and the reference number of the property you're after, which will be on the advert.

3 Pick out your ideal property

by looking in *Greenwich Time* or regularly checking the website:

www.greenwich.gov.uk/homes

Click on your preference on the website. If you don't have a computer, you can always use one for free in either your neighbourhood housing office, library or UK Online centre.

4 Apply in one of two ways

- Phone the 24-hour hotline 020 8921 4340. It's an automatic push-button system and calls will be charged at the normal local rate, or
- Via the Council's website

www.greenwich.gov.uk/homes

24-hour hotline

The Greenwich Homes (Choice Based Lettings) Telephone Bidding Line is available in:
 English 020 8921 4340

Greenwich Homes (locations « au choix ») Ligne téléphonique de demande disponible en français en composant le :
 French 020 8921 4330

Có sẵn Đường dây Đầu giá Điện thoại Greenwich Homes (Tài sản Dựa trên Sự chọn lựa) ở:
 Vietnamese 020 8921 4343

Guryaha Xaafadda Greenwich (Guri-ijaar Ku-saleysan kala-doorashao) Khadka Ku-tartanka waxaa laga helaa:
 Somali 020 8921 4345

Greenwich Konutları (Tercihle Dayalı Kiralık Konut) Telefon ile Teklif Verme Hattı Türkçe de aranabiliyor:
 Turkish 020 8921 4347

格林威治家居 (揀選租屋計劃) 開通電話競投專線:

Cantonese 020 8921 4370

க்ரீன்விச் இல்லங்கள் (தேர்ந்தெடுக்கப்பட்ட வாடகை வீடுகள்) ஏலப் பிரிவு தொலைபே இங்கு கிடைக்கும்:

Tamil 020 8921 4300

The next edition of GreenwichHomes will be available on **Wednesday 18 August 2010 at midday** and will include any Housing Association properties when available. Closing date for all applications for this issue is midnight on **Sunday 15 August 2010**.

www.greenwich.gov.uk/homes

Choice hotline 020 8921 4340

GreenwichHomes

Greenwich Council's Choice Based Lettings Scheme

Only priority applicants can apply

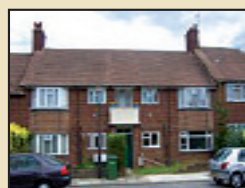


L&Q Housing Trust

Ref Number: 85654
Keightley Drive SE9
2 Bed 1st Floor Mais
Gdn Lifted Rad C/H
Pref. to med. Prop has
a stairlift
£93.47 pw Bands A&B

picture not
available

Ref Number: 112061
Combe Avenue SE3
2 Bed 1st Floor Flat
Unlifted Rad C/H
Pref to Ferrier regen.
£89.22 pw Bands A&B



Ref Number: 112855
Witherston Way SE9
1 Bed 1st Floor Flat
Unlifted Rad C/H
£78.97 pw Bands A&B



Ref Number: 113662
Henwick Road SE9
1 Bed 2nd Floor Flat
Lifted Entry phone
Rad C/H
£79.27 pw Bands A&B



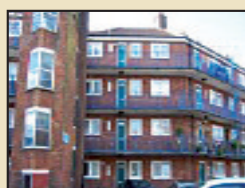
Ref Number: 113664
Coltman House Welland St SE10
3 Bed 1st Floor Flat
Lifted Entry phone
Rad C/H
£94.59 pw Bands A&B

picture not
available

Ref Number: 113688
Shirebrook Rd SE3
2 Bed House Gdn
Rad C/H
Pref to ferrier regen
£88.96 pw Bands A&B

picture not
available

Ref Number: 114034
Plane Tree House Lansdowne Lane SE7
2 Bed Grnd Floor Mais
Entry phone Rad C/H
Pref to ferrier regen.
£86.95 pw Bands A&B



Ref Number: 114057
Dyson House Blackwall Lane SE10
2 Bed 2nd Floor Flat
Unlifted Entry phone
Rad C/H
£87.88 pw Bands A&B



Ref Number: 114217
Beanshaw SE9
2 Bed Grnd Floor Flat
Gdn Entry phone
Rad C/H No Pkg
£85.77 pw Bands A&B



Ref Number: 114317
Manister Road SE2
2 Bed 1st Floor Flat
Unlifted Entry phone
£77.99 pw Bands A&B



Ref Number: 114422
Chalcombe Road SE2
1 Bed 2nd Floor Flat
Unlifted Entry phone
Rad C/H No Pkg
£70.65 pw Bands A&B



L&Q Housing Trust

Ref Number: 114618
Woolwich Road SE10
1 Bed Grnd Floor Flat
Rad C/H
£91.38 pw Bands A&B

Are your contact details up-to-date?

As it is often necessary to contact applicants at short notice, it is important that we have the current contact details for all our applicants.

Details can be given via e-mail to
housing-allocations@greenwich.gov.uk

or by tel 020 8921 2941

Sheltered Housing

If you are 55 or over then you may consider sheltered housing provided by the Council or housing association. Sheltered blocks have a Scheme Manager on hand to provide help and support if needed. Sheltered housing is a good option for older people who can live independently, but would feel more secure within this environment.

Bands A&B priority applicants

Fewer Bands A&B priority applicants have been bidding for advertised properties in recent weeks. **Please note that if you do not bid on a regular basis you risk losing your priority status.**

Please contact the office if you need help in bidding.

Choice hotline 020 8921 4340

GreenwichHomes

Greenwich Council's Choice Based Lettings Scheme

Anyone on the housing list can apply for these

Rsl allocations policy applies to **Housing Association** properties



Gallions HA

Ref Number: 55935
Manning Court
Titmuss Ave SE28
1 Bed 3rd Floor Flat
Lifted Entry phn Rad C/H
£85.01 pw Band C



Ref Number: 112826
Blann Close SE9
1 Bed Grnd Floor Flat
Lifted Entry phone
Combi Boiler & 1 Rad
Pref to over 40's.
£79.72 pw Band C



Ref Number: 113279
Cowen House
Mayplace Lane SE18
2 Bed Grnd Floor Flat
Entry phone Gas Fire
Only Min 1 child
£84.07 pw Band C



Ref Number: 113380
Tivoli Gardens SE18
Bedsit Ground Flr Flat
Gdn
Rad C/H No Pkg
£62.89 pw Band C



Ref Number: 113561
Dahlia Road SE2
1 Bed 3rd Floor Flat
Unlifted Rad C/H
No Pkg
£70.85 pw Band C



Ref Number: 113706
Eynsham Drive SE2
Bedsit 1st Floor Flat
Unlifted Gas Fire &
Rad C/H
£63.91 pw Band C



Ref Number: 113708
Stanbrook Road SE2
1 Bed 3rd Floor Flat
Lifted Entry phone
No Pkg
£70.77 pw Band C



Ref Number: 113709
Nightingale Place SE18
2 Bed 5th Floor Flat
Lifted Entry phone
Rad C/H
£78.34 pw Band C



Ref Number: 113933
Eardley Point
Wilmount St SE18
1 Bed 5th Floor Flat
Lifted Entry phone
Rad C/H
£68.46 pw Band C



Ref Number: 114032
Valleyside
Lansdowne Lane SE7
2 Bed 6th Floor Flat
Lifted Entry phone
Rad C/H
£83.66 pw Band C



Gallions HA

Ref Number: 114338
Tawney Road SE28
3 Bed 2nd Floor Mais
Unlifted Entry phone
Rad C/H
£100.36pw Band C



Ref Number: 114398
Sewell Road SE2
3 Bed Grnd Flr Mais
Gdn No Pkg
Min 2 child any age
£88.24 pw Band C



Ref Number: 114425
Eynsham Drive SE2
1 Bed 2nd Floor Flat
Lifted Entry phone
Rad C/H
£71.01 pw Band C

Please note you will not be able to bid without a reference number.
It is very important that you keep this safe.

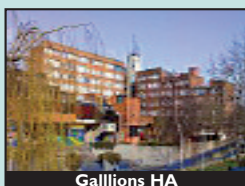


Coming Soon

Creekside, SE8

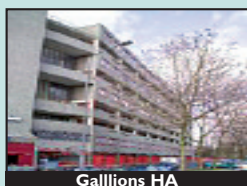
Estimated to be ready end of September 2010.

An exciting new mixed tenure scheme which includes social housing and shared ownership schemes. It comprises 2& 3 bed flats with views over the river Thames and Canary Wharf.



Gallions HA

Ref Number: 114437
Harold Wilson House
Arnott Close SE28
1 Bed Flat Rad C/H
Lifted Entry phn
£87.14 pw Band C



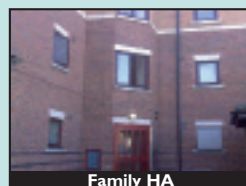
Gallions HA

Ref Number: 114619
Webb Court
Attlee Road SE28
1 Bed 3rd Floor Flat
Lifted Entry phone
Rad C/H
£82.55 pw Band C



Hyde Housing Association

Ref Number: 79207
Chapter House
Federation Rd SE2
1 Bed 2nd Floor Flat
Unlifted Entry phone
Rad C/H
£107.41pw Band C



Family HA

Ref Number: 86174
Berthon Street SE8
1 Bed 1st Floor Flat
Unlifted Rad C/H
£94.79 pw Band C

Choice hotline 020 8921 4340

GreenwichHomes

Greenwich Council's Choice Based Lettings Scheme

Sheltered / Retirement
Housing

Sheltered Housing provides independence in a secure and friendly environment. Each Sheltered Scheme has a Scheme Manager who is the main source of support. There is 24 hour cover from the Telecare Service. The age criteria is over 60 years, but we can consider people over 55 years with a support need.



Our current vacancies include: (several ready to let)

One Person Properties

Beacham Close, Charlton, Ground fl, Studio Flat.

Cooper Court, Plumstead, 1st fl studio Flat.

Defiance Walk, Woolwich Dockyard, 1st Fl Studio Flat.

Eltham Road, Lee, 2nd floor Studio flat.

George Akass House, Plumstead, 1 bed, 1st floor flat.

Green Lawns, Woolwich, Ground Floor Studio Flat

Haven Lodge, Woolwich, 2nd fl Studio Flat

Hider Court, Shooters Hill, 1 bed, 1st fl flat

Langton Way, Blackheath, Ground fl, Studio Flat.

Len Clifton Hse, Woolwich, 2nd fl Studio flat

40 Littleheath, Charlton, Ground floor Studio flat

Minnie Bennett Hse, Shooters Hill Rd, 1st floor, Studio Flat

Sam Manners Hse, Grnwich, 2nd fl Studio flat

Sarah Turnbull House, Woolwich, 3rd fl Studio flat.

Strand Court, Plumstead, 3rd Fl Studio Flat.

174 Swingate Lane, Plumstead Common, 2nd Flr Studio Flat.

One Bedroom, Two Person Properties (unless stated)

Collerston House, Greenwich, 1st floor flat

Garnett close, Eltham, 1st floor flat.

Haven Lodge, Woolwich, 2 Bed, Grnd Fl Flat.

Sam Manners House, Greenwich, 1st fl flat.

Sarah Turnball House, Woolwich, 2 bed, 2nd Floor flat.

All the above properties are lifted unless stated.

If you are interested in Sheltered housing please ring **020 8921 2671**, all applications are subject to a Sheltered Housing Assessment

This is what happened to the homes advertised in issue 194

Address	Bed-rooms	Property Type	No of Bids	Reg date of successful app	Band
Wren Path SE28 0DX	1	FLAT	102	13/11/2008	C
Hawksmoor Close SE18 1BL	1	FLAT	267	11/03/2006	C
Sewell Road SE2 9XN	3	MAISONETTE	121	10/05/2004	C
Meridian Road SE7 8QJ	3	HOUSE	131	08/05/2000	A
Jason Walk SE9 3DJ	1	FLAT	Withdrawn		
Hengist Road SE12 9EE	0	FLAT	130	28/10/2003	C
The Mound SE9 3BA	2	FLAT	No Eligible Bids		
Bingham Point Wilmount Street SE18 6RJ	1	FLAT	215	26/07/2007	C
Eglinton Road SE18 3SN	2	MAISONETTE	19	21/06/2010	B
Openshaw Road SE2 0TB	1	FLAT	218	11/01/2008	C
Polthorne Grove SE18 7DU	0	FLAT	102	09/05/2007	C
Warner House Russet Way SE13 7ND	2	FLAT	11	26/05/2010	B
Ravens Way SE12 8HB	2	FLAT	27	11/02/1974	A
Elliston House Wellington Street SE18 6QF	1	FLAT	168	06/05/2002	C
Crescent House Bliss Crescent SE13 7RJ	3	FLAT	9	17/06/2008	C
Lord Warwick Street SE18 5QD	0	FLAT	97	01/04/2008	C
Sewell Road SE2 9XN	4	MAISONETTE	84	22/12/2004	C
Sowerby Close SE9 6HB	1	FLAT	25	01/01/1994	A
Humber Road SE3 7EF	1	FLAT	59	27/05/2002	A
Leila Parnell Place Charlton Road SE7 7TD	2	FLAT	21	19/11/2009	B
Samuel Street SE18 5LF	0	FLAT	89	20/10/2006	C
Earl Rise SE18 7NF	2	MAISONETTE	188	24/01/2007	C
Reeves Road SE18 3QW	1	FLAT	24	24/09/2009	B
Middle Park Avenue SE9 5HS	3	PARLOUR HSE	109	08/10/1981	A
Kimber House Barnfield Road SE18 3TU	3	FLAT	109	08/10/2007	C
Mabbett House Nightingale Place SE18 4HU	1	FLAT	166	16/11/2007	C
Knee Hill Crescent SE2 0YL	2	MAISONETTE	19	22/09/2009	B
Robert Street SE18 7ND	2	MAISONETTE	14	01/07/2010	B
Hengist Road SE12 9EE	0	FLAT	107	13/03/2008	C
Glyndon Road SE18 7PA	2	MAISONETTE	193	02/03/2006	C
Timbercroft Lane SE18 2SD	2	FLAT	26	31/01/2000	A
Thornham Street SE10 9SA	2	FLAT	18	18/05/2009	B
Blenheim Crescent Hardinge Crescent SE18 6TD	2	FLAT	282	20/04/2001	C
Middle Park Avenue SE9 5QJ	1	FLAT	34	15/05/2006	B
Blaker Court Cherry Orchard Estate SE7 7DU	2	FLAT	178	29/05/2008	C
Webb Court Attlee Road SE28 8DN	1	FLAT	123	12/10/2007	C

Greenwich Time is now being published 48 weeks a year and is delivered to all residents. **GreenwichHome adverts are included in every issue.**

SCENE

Books

A day in the life of love-lorn pair

- P24

Music

'Uncool' pop trio are back. Yay.

- P24



Shoot to thrill

Independent film-maker **Wayne Saunders** dreams of running film schools for Greenwich youths



ELTHAM-based film-maker Wayne Saunders is certainly in the frame on a

national and international level. But he'd like nothing more than to set the scene locally on his doorstep in Greenwich.

Over the last year the multi talented writer/ director /producer has launched three major films abroad. He's also made several music videos and run numerous film workshops - including inspirational lectures - at schools and other community venues from Barking to Berkshire. 'Crunch' - tells the story of a Jamaican immigrant's struggle in London; 'Role Model' is a half-hour documentary looking at artists' behaviour in the entertainment world and 'The Village' tells the tale of an aspiring kick boxer who's guided to success at school and in sport by his teachers

and neighbours. The filming, production and promotion of the videos and films have seen Wayne zig-zagging between the UK, the US, the Caribbean and Holland. But he's also been criss-crossing the nation for various UK-based projects all centred around film.

One of his latest is to help a young ex offender from Huddersfield to produce a film for ITV Fixers. The TV documentary campaign helps 16-25 year-olds fix things for the better by giving them the resources to get their voices heard. The series presents a positive image of hard-to-reach young people as they make a difference and highlight issues important to them by organising an event, making a video or film or setting up a website. It was an opportunity that Wayne pounced on as supporting young people is something close to the film-maker's heart.

He does this through the educational arm of his production company Boss Crowns Productions which runs film, video and TV production workshops designed to inspire and encourage young people. "I do workshops and talks for schools, colleges, universities and cultural groups all over London and all over the country but I'd like to do more stuff in this area," said Wayne. The former pupil of Crown Woods school is well-known in his neighbourhood for his film expertise but he'd like to use his skills in a more official appointment. "I've run film schools and after-school film sessions at schools in Barking and neighbouring boroughs like Bexley and Southwark. I've approached local organisations but nothing much has come of it. I'd really

like to run some sort of scheme in a local school - maybe starting off at Crown Woods." He added: "It's all about using video production as a tool. We look at the different aspects of making a film from pre production to shooting and post production and focus on issues of preparation, confidence, teamwork and promotion - even if people aren't interested in making films they're developing skills and qualities which can be applied to other aspects of their lives. "Film is something that can involve everybody, it doesn't matter how old you are or what race or gender you are, it's open to everybody." The dad-of-one is currently preparing for a two-day mini film festival from October 2 to help showcase the work of other independent film-makers and music artistes. In the meantime, check out Wayne's world of film at www.bosscrowns.com or email him about the film workshops at bcrowns@aol.com

Hilary Bryan



ON LOCATION: Wayne in Aruba, main pic, and above filming *Crunch* in Jamaica

Walking snappers

Ramblers capture the moment

A SELECTION of photographs of the borough taken by the people of Greenwich is being showcased in a stunning exhibition this summer. The photographs were taken along the Green Chain - a 50-mile network of paths linking 300 open spaces across SE London. They're on display at the Elixir Gallery at Queen Elizabeth Hospital in Woolwich until the end of September and admission is free. Those who lived, worked or studied in Greenwich were encouraged to send in photographs of features including landscapes and wildlife along the Green Chain route for the chance to be selected for the exhibition.



MONUMENTAL: Severndroog Castle captured Elixir Arts Manager Jeanie McNulty said: "We are delighted at the response - the quality of the photographs really represents the talents of Greenwich people. The Green Chain Captured exhibition celebrates local creativity and encourages the use of fantastic local amenities such as the Green Chain, whilst promoting walking as a healthy lifestyle option." The thirty-five photographs were selected by an invited panel of judges, to be framed and hung in the special exhibition in Woolwich which will then transfer to Age Exchange Blackheath in the autumn, and then on to other South London Healthcare NHS Trust hospitals in 2011. Greenwich based professional photographers Mike Curry and Ian Cook gave advice to photographers going on walks along the Green Chain in the run up to the exhibition, giving handy tips on what makes a great landscape or nature photograph. Elixir Arts is grateful for support from the Greenwich Council's Arts & Culture for the Green Chain Captured exhibition.

Lily La
Greenwich Chain Captured is on until the end of September at Elixir Gallery, Queen Elizabeth Hospital.

Where for art thou?.. Edinburgh

FOLLOWING the sell-out runs at Greenwich Theatre and Riverside Studios in Hammersmith, Kidbrooke School is taking its production of *Romeo and Juliet* to the Edinburgh Festival this month. Directed by Lucy Cuthbertson, the head of drama at the school on Corelli Road, the adaptation of the play by William Shakespeare is full of humour, energy and new, contemporary ideas, and will be at the Scottish festival from August 15 - 21. The production of the famous play was first staged at Greenwich Theatre in March 2009. Following its success, they were then transferred in the autumn to Riverside Studios. The play's modern setting made it easy for the young people

taking part, and watching, to relate to issues such as gang violence and knife crime which are tackled in the performance. James Haddrell, director of Greenwich Theatre, said: "This production undoubtedly confirms Kidbrooke as home to one of the most talented young companies in the country. This is without doubt the most vital, vibrant production of *Romeo and Juliet* that I have ever seen - presenting violent tragedy." The cast of 20 from Kidbrooke include young people who have already proven themselves as outstanding in drama both within the school and beyond. Several have already performed with the school

on West End stages at least once, in some cases more. Two were also chosen to perform as members of the National Youth Theatre. Laura Williams, of London Drama, said: "This production was a real eye-opener in terms of what can be achieved in school productions and I would have loved to have observed the rehearsal process to see how such a finessed and emotional true production came into being." Past performances by the group include a 2005 production of *Just at the Olivier* National Theatre and Hotel World at the Greenwich Theatre in 2007 both by author Ali Smith.

Lily La



Highlights of the week



BBC One
The Deep,
Tuesday, 10th 9pm

Two of the crew are trapped and running out of air — and must decide whether to risk boarding the mysterious vessel that looms above them. James Nesbitt stars.



BBC Two
The Culture Show at the Edinburgh Festival,
Thursday, 12th 7pm

Sue Perkins invites comedy stars to recall their debut at the Fringe, while Alastair Sooke gives his verdict on the Martin Creed retrospective.



ITV1
30 Years of An Audience With,
Saturday, 14th 8.50pm

Performances by Kylie Minogue, Michael Buble and Al Murray — one of only a handful of artists to have been asked back by the entertainment series.

	Tuesday, 10th August	Wednesday, 11th August	Thursday, 12th August	Friday, 13th August	
BBC One	6.00 Breakfast. 9.15 Heir Hunters. 10.00 Homes Under the Hammer. 11.00 Living Dangerously. 11.30 Cash in the Attic. 12.15 Bargain Hunt. 1.00 BBC News; Weather. 1.30 Regional News. 1.45 Doctors. 2.15 Murder, She Wrote. 3.00 BBC News. 3.05 CBeebies. 3.30 CBBC. 5.15 Weakest Link: 10th Anniversary. 6.00 BBC News.	6.00 Breakfast. 9.15 Heir Hunters. 10.00 Homes Under the Hammer. 11.00 Living Dangerously. 11.30 Cash in the Attic. 12.15 Bargain Hunt. 1.00 BBC News; Weather. 1.30 Regional News. 1.45 Doctors. 2.15 Murder, She Wrote. 3.00 BBC News. 3.05 CBeebies. 3.30 CBBC. 5.15 Weakest Link: 10th Anniversary. 6.00 BBC News. 6.30 Regional News.	6.00 Breakfast. 9.15 Heir Hunters. 10.00 Homes Under the Hammer. 11.00 Living Dangerously. 11.30 Cash in the Attic. 12.15 Bargain Hunt. 1.00 BBC News; Weather. 1.30 Regional News. 1.45 Doctors. 2.15 Murder, She Wrote. 3.00 BBC News. 3.05 CBeebies. 3.30 CBBC. 5.15 Weakest Link: 10th Anniversary. 6.00 BBC News. 6.30 Regional News. 7.00 The One Show.	6.00 Breakfast. 9.15 Heir Hunters. 10.00 Homes Under the Hammer. 11.00 Living Dangerously. 11.30 Cash in the Attic. 12.15 Bargain Hunt. 1.00 BBC News; Weather. 1.30 Regional News. 1.45 Doctors. 2.15 Murder, She Wrote. 3.00 BBC News. 3.05 CBeebies. 3.30 CBBC. 5.15 Weakest Link: 10th Anniversary. 6.00 BBC News. 6.30 Regional News. 7.00 The One Show. 7.30 EastEnders. 8.00 Celebrity MasterChef. 9.00 Mistresses. 10.00 BBC News. 10.25 Regional News. 10.35 Inside Sport: The Princess Royal at 60. 11.15 FILM: The Gingerbread Man (1998) Legal thriller, with Kenneth Branagh. 1.10 Panorama. 1.40 Countryfile. 2.35 Celebrity MasterChef. 3.35 Put Your Money Where Your Mouth Is. 4.20 BBC News.	8.00 EastEnders. 8.30 Celebrity MasterChef. 9.00 My Family. 9.30 The Old Guys. 10.00 BBC News. 10.25 Regional News. 10.35 Would I Lie to You? 11.05 The National Lottery Draws. 11.15 FILM: Ransom (1996) Thriller remake, starring Mel Gibson. 1.15 Celebrity MasterChef. 2.45 Put Your Money Where Your Mouth Is. 3.30 BBC News.
BBC Two	6.00 CBeebies. 8.00 CBBC. 11.20 FILM: Bitter Victory (1958) Second World War drama, with Richard Burton and Curt Jurgens. 1.00 The World at War. 1.50 Ready Steady Cook. 2.15 Instant Restaurant. 3.00 Diagnosis Murder. 3.45 Flog It! 4.30 Cash in the Celebrity Attic. 5.15 Escape to the Country. 6.00 Eggheads. 6.30 Restoration Roadshow.	7.00 Coast. The team explores Brittany in northern France. 8.00 Domesday. Stephen Baxter examines the purpose of the Domesday Book. 9.00 That Mitchell and Webb Look. 9.30 Shooting Stars. 10.00 Russell Howard's Good News. 10.30 Newsnight. 11.20 How Not to Live Your Life. 11.50 The Normans. 12.50 BBC News. 4.15 Close.	6.00 CBeebies. 8.00 CBBC. 11.20 FILM: Nobody Runs Forever (1968) Spy thriller, starring Rod Taylor. 1.00 The World at War. 1.50 Ready Steady Cook. 2.15 Instant Restaurant. 3.00 Diagnosis Murder. 3.45 Flog It! 4.30 Cash in the Celebrity Attic. 5.15 Escape to the Country. 6.00 Eggheads. Quiz show, hosted by Dermot Murnaghan. 6.30 Restoration Roadshow.	6.00 CBeebies. 8.00 CBBC. 11.10 FILM: Stage Fright (1950) Hitchcock thriller, with Jane Wyman. 1.00 The World at War. 1.50 Ready Steady Cook. 2.15 Instant Restaurant. 3.00 Live Swimming. The European Aquatic Championships. 4.30 Cash in the Celebrity Attic. 5.15 Escape to the Country. 6.00 Eggheads. 6.30 Restoration Roadshow.	9.00 Home Movie Roadshow. Footage of the Monty Python team at work. 10.00 Roger and Val Have Just Got In. Roger is annoyed when Val uses his fridge. 10.30 Newsnight. 11.00 The Review Show at the Edinburgh Festival. 11.50 That Mitchell and Webb Look. 12.20 Shooting Stars. 12.50 Russell Howard's Good News. 1.20 The Mighty Boosh Live. 3.45 Close.
ITV	6.00 GMTV. 9.25 The Jeremy Kyle Show. 10.30 This Morning. 12.30 Dinner Date. 1.30 ITV News; Weather. 1.55 London News. 2.00 Dickinson's Real Deal. 3.00 30three. 4.00 Midsomer Murders. 5.00 Britain's Best Dish. 6.00 London Tonight. 6.30 ITV News; Weather. 7.00 Emmerdale. Rhona discovers she has feelings for Paddy. 7.30 Children's Hospital.	8.00 New Who Wants to Be a Millionaire? Big-prize quiz. 9.00 The Bill. Callum struggles with the shock of his father's death. 10.00 ITV News at Ten; Weather. 10.30 London News. 10.35 Ladette to Lady. The five remaining contenders host a three-course dinner for 16 guests. 11.35 October Road. 12.30 The Zone. 2.30 The Jeremy Kyle Show. 3.25 ITV Nightscreen. 5.30 ITV Morning News.	7.30 Live International Football. England v Hungary (Kick-off 8.00pm). 10.10 ITV News; Weather. 10.30 London News. 10.45 International Football Highlights. England v Hungary. 11.45 Times Festival Highlights 2010. Performances by Goldfrapp, Biffy Clyro and Plan B. 12.40 The Zone. 2.40 The Jeremy Kyle Show. 3.35 ITV Nightscreen. 5.30 ITV Morning News.	6.00 GMTV. 9.25 The Jeremy Kyle Show. 10.30 This Morning. 12.30 Dinner Date. 1.30 ITV News; Weather. 1.55 London News. 2.00 Dickinson's Real Deal. 3.00 30three. 4.00 Midsomer Murders. 5.00 Britain's Best Dish. 6.00 London Tonight. 6.30 ITV News; Weather. 7.00 Emmerdale. 7.30 Where Does All Our Water Go? Tonight. 8.00 Emmerdale.	9.00 Doc Martin. The new midwife in the village proves unpopular with Martin. 10.00 ITV News at Ten; Weather. 10.30 London News. 10.35 FILM: The Sixth Sense (1999) Supernatural thriller, starring Bruce Willis. 12.35 The Zone. 2.35 FILM: Anne of the Thousand Days (1969) Historical drama, starring Richard Burton. 5.05 ITV Nightscreen. 5.30 ITV Morning News.
Channel 4	6.15 The Hoobs. 7.05 Big Brother's Little Brother. 7.30 Big Brother. 8.40 Frasier. 9.10 Smallville. 10.00 Privileged. 10.45 Friends. 11.45 Rockcorps. 12.00 Channel 4 News Summary. 12.05 Brothers & Sisters. 12.55 Come Dine with Me. 3.25 Countdown. 4.10 Deal or No Deal: Hall of Fame. 5.00 10 Years Younger: The Challenge. 6.00 The Simpsons.	6.30 Hollyoaks. 7.00 Channel 4 News. 7.55 4thought.tv. 8.00 Help! My House Is Falling Down. 9.00 Who Knows Best: Getting a Job. 10.00 Big Brother. 11.10 The Inbetweeners. 11.45 Pete Versus Life. 12.20 The Poker Lounge. 1.20 Big Brother: Live. 4.00 KOTV Boxing Weekly. 4.25 British Formula 3 Championship. 4.50 The Grid. 5.20 World Sport. 5.45 Sports on 4: 2010 Roxy Jam.	6.15 The Hoobs. 7.05 Big Brother's Little Brother. 7.30 Big Brother. 8.40 Frasier. 9.05 Smallville. 9.55 Privileged. 10.45 Friends. 11.45 Rockcorps. 12.00 Channel 4 News Summary. 12.05 Brothers & Sisters. 12.55 Come Dine with Me. 3.25 Countdown. 4.10 Deal or No Deal: Hall of Fame. 5.00 10 Years Younger: The Challenge. 6.00 The Simpsons.	6.15 The Hoobs. 7.05 Big Brother's Little Brother. 7.30 Big Brother. 8.40 Frasier. 9.10 Smallville. 9.55 Privileged. 10.45 Friends. 11.45 Pocket TV. 12.00 Channel 4 News Summary. 12.05 Brothers & Sisters. 12.55 Come Dine with Me. 3.25 Countdown. 4.10 Deal or No Deal: Hall of Fame. 5.00 10 Years Younger: The Challenge. 6.00 The Simpsons. 6.30 Hollyoaks.	6.10 The Hoobs. 7.00 Big Brother's Little Brother. 7.25 Big Brother. 8.35 Frasier. 9.00 Smallville. 9.50 Privileged. 10.45 Friends. 11.45 Pocket TV. 12.00 Channel 4 News Summary. 12.05 Brothers & Sisters. 12.55 Come Dine with Me. 3.25 Countdown. 4.10 Deal or No Deal: Hall of Fame. 5.00 10 Years Younger: Bus Pass Challenge. 6.00 The Simpsons. 6.30 Hollyoaks. 7.00 Channel 4 News. 7.25 4thought.tv. 7.30 Missing: Claudia Lawrence.
Five	6.00 Milkshake! 9.15 The Wright Stuff. 10.45 Trisha Goddard. 11.45 CSI: NY. 12.40 Five News. 12.45 Build a New Life: Was It Worth It? 1.40 Don't Stop Believers. 1.45 Neighbours. 2.20 CSI: NY. 3.05 FILM: No Ordinary Baby (2001) Drama, starring Bridget Fonda. 5.00 Five News. 5.30 Neighbours. 6.00 The Boss Is Coming to Dinner. 6.25 Don't Stop Believers. 6.30 Live from Studio Five.	7.00 Five News at 7. 7.15 Cricket on Five. 8.00 Great Railway Adventures with Dan Cruickshank. 9.00 CSI: Miami. 10.55 Don't Stop Believers. 11.00 CSI: Crime Scene Investigation. 12.50 NCIS. 12.55 SuperCasino. 4.00 The Boss Is Coming to Dinner. 4.25 Wildlife SOS. 4.50 Rough Guide to Activity Holidays. 5.05 The New Tomorrow. 5.30 Michaela's Wild Challenge.	6.00 Milkshake! 9.15 The Wright Stuff. 10.45 Trisha Goddard. 11.45 CSI: NY. 12.40 Five News. 12.45 Build a New Life: Was It Worth It? 1.40 Don't Stop Believers. 1.45 Neighbours. 2.20 CSI: NY. 3.05 FILM: While I Was Gone (2004) Drama, starring Kirstie Alley. 5.00 Five News. 5.30 Neighbours. 6.00 The Boss Is Coming to Dinner. 6.25 Don't Stop Believers. 6.30 Live from Studio Five.	6.00 Milkshake! 9.15 The Wright Stuff. 10.45 Trisha Goddard. 11.45 CSI: NY. 12.40 Five News. 12.45 Build a New Life: Was It Worth It? 1.40 Don't Stop Believers. 1.45 Neighbours. 2.20 CSI: NY. 3.05 Rosamunde Pilcher's Autumn. 5.00 Five News. 5.30 Neighbours. 6.00 The Boss Is Coming to Dinner. 6.25 Don't Stop Believers. 6.30 Live from Studio Five.	6.25 Don't Stop Believers. 6.30 Live from Studio Five. 7.00 Five News at 7. 7.15 CSI: NY. 12.40 Five News. 12.45 Build a New Life: Was It Worth It? 1.40 Don't Stop Believers. 1.45 Neighbours. 2.20 CSI: NY. 3.05 FILM: Emma's Wish (1998) Fantasy drama, starring Joanna Kerns. 5.00 Five News. 5.30 Neighbours. 6.00 The Boss Is Coming to Dinner. 6.25 Don't Stop Believers. 6.30 Live from Studio Five.

A Taste of Health

Free 5-Week Community Cookery Clubs

We have clubs in several locations:

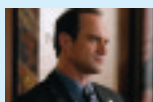
Charlton	Deptford	Thamesmead
Woolwich	Plumstead	Eltham
	Greenwich	

Learn how to cook quick, delicious and healthy meals!

For more information or to book a place call 0800 9171273

**Channel 4**
School of Comedy,
Wednesday, 11th
11.10pm

New series. Teenage comic actors, including Son of Rambow star Will Poulter, present their take on the adult world.

**Five**
Law & Order: Special
Victims Unit,
Friday, 13th 10pm

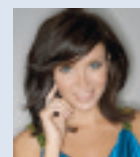
The team searches for a missing teenager with a genetic condition. Drama, starring Christopher Meloni and Ice-T.

**Film of the Week**
The Sixth Sense,
Friday, 13th 10.35pm

A child psychologist takes on the case of a boy terrified by ghostly apparitions. M Night Shyamalan's supernatural thriller, with Bruce Willis and Haley Joel Osment.

Digital & Cable**Tuesday****Britain by Bike,**

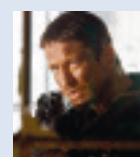
BBC4, 8.30pm
Clare Balding rides her bicycle along the border between West Yorkshire and Lancashire, beginning in Hebden Bridge, where she sees a collection of photographs by Alice Longstaff that captures life in the town during the 1940s. Part of the Call of the Wild season.

**Wednesday****Dannii Minogue: Style Queen,**

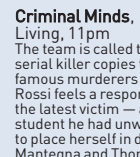
ITV2, 9pm
The X Factor judge travels to South Africa to film for a commercial with Twiggy and Lisa Snowdon, and when the work is over she and her partner Kris Smith head off on safari. She also receives an Elle Style award from her sister Kylie, works on a fragrance and catches up with the X Factor tour.

Thursday**Accidentally on Purpose,**
E4, 10pm

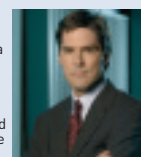
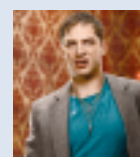
Billie and Zack attend separate parenting classes due to conflicting schedules — but she faces competition at the course from her sister, who performs better in the assigned tasks. With Jenna Elfman, Jon Foster, Ashley Jensen, Nicolas Wright and Grant Show.

**Friday****Gamer,**

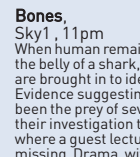
Sky Movies Premiere, 10pm
Premiere. In the future, convicts are forced to take part in a violent real-life video game, their every action dictated by players using mind control technology, while a corrupt billionaire rakes in the profits. Sci-fi thriller, starring Gerard Butler and Michael C Hall.

Saturday**Criminal Minds,**

Living, 11pm
The team is called to Cleveland when a serial killer copies the methods of famous murderers from the past, and Rossi feels a responsibility towards the latest victim — a criminology student he had unwittingly encouraged to place herself in danger. Starring Joe Mantegna and Thomas Gibson.

**Sunday****Martina Cole's The Take,**

Sky1, 10pm
Drama, based on the novel of the same name. Recently released from prison, aspiring gangster Freddie Jackson vows to make a name for himself in Eighties London, backed by East End kingpin Ozzy, who he met in jail. Starring Tom Hardy and Brian Cox.

Monday**Bones,**

Sky1, 11pm
When human remains are discovered in the belly of a shark, Brennan and Booth are brought in to identify the body. Evidence suggesting the victim had been the prey of several fish directs their investigation to an aquarium where a guest lecturer has gone missing. Drama, with Emily Deschanel.

**THE WINDOW DOCTOR**

- We cure all Double Glazing Problems
- Patio Door Wheels/Runners
- Misted & Broken Units
- Burglary Damage Repairs
- Handle, Hinges & Locks Replaced
- All Insurance Work Undertaken

**NO
CALL
OUT
CHARGE****Mob: 07830 025511 Tel: 020 8857 0630***Hair by Friends***Cuts only £15 and Perms £40 All In**

Friendly Staff who will make you feel
comfortable as soon as you walk in
Monday to Saturday
8.00am to 5.00pm

For a **warm** welcome call Maureen on**020 8850 2380****44B Well Hall Road, Eltham****Special Offer!**
Cut & Blowdry Inc.
£50.00**Open late**
on Fridays

FINAL SCENE

Look Hoose back

Chirpy popsters chime in

IF you thought you knew The Hoosiers, think again. Three years after they first stormed the charts with their feel good brand of fizzy pop, and singles *Worried About Ray* and *Goodbye Mr A*, the pop trio return with a brand new sound for 2010. The Hoosiers are a band whose primary aim is to push the boundaries of pop, citing inspiration from an array of artists including Jeff Buckley, The Cure and The Flaming Lips. Striving to create a new sound - which they describe as 'odd pop' influenced by a number of musical genres, their new album *The Illusion Of Safety* does just that. Out are the skippy beats, perky melodies, lashings of falsetto and nods to 70s soft rock that defined their previous sound, and in come synths, dancefloor-friendly beats, a dash of Giorgio Moroder and triumphant, multi-tracked choruses that recall the pomp of the Pet Shop Boys' *Go West*. After shifting over half a million copies of their 2007 UK number one



debut album, *The Trick To Life*, the indie pop trio's *The Illusion Of Safety*, is an album that adds more electronic elements to their glam-pop sound. Lead single *Choices* is as catchy a song as you're likely to find in modern pop, full of the bravado and sense of humour that helped The Hoosiers earn a strong fanbase from the off. Packed with well-constructed pop, *The Illusion Of Safety* also features the synth stomp of *Unlikely Hero* and the reflective *Who Said Anything*. Self-proclaimed 'uncool' indie popsters hailing from Reading and Stockholm, The Hoosiers smart jaunty pop propelled their debut album to the top spot in the UK album chart and led to a 2008 Brit Award nomination for their *Worried About Ray* single. Their past successes pave the way for their eagerly anticipated second album.

Andy Watson

The Illusion Of Safety is in store at HMV, Greenwich Shopping Park, Charlton, on August 16

Is anybody there?

Alex Brooks delves into the iPhone 4's well-publicised flaw



IT has been over a month now since Apple's latest iPhone hit the

UK, and if you were to go by the number sold you might think it had been a successful update to the ever popular handset. In the first three days of sales Apple shifted 1.7 million units in the few countries that were graced with its availability. But despite measurable success the iPhone 4 has been dogged with problems that have brought a great deal of unwanted media attention with it. Biggest of which is what Apple refers to as 'antennagate' - the problem the media attack-dogs set their sights on, and the one most blown out of proportion. The new phone's ariel is a metal band that runs around the outside, and apart from looking really nice and offering superb build quality, the band is split into two types of antenna, the first half for Wi-Fi, Bluetooth and GPS. At its launch the antenna was touted by Apple as a stroke of design genius which had a functional



GOOD LOOKING BIT OF KIT: but early versions of the iPhone 4 left callers hanging on

purpose too: putting the antenna on the outside and making it really large would

boost signal, they said. While the original claim isn't wrong it soon became clear that in some circumstances the opposite was true. In an area of weak signal, gripping the phone in a normal fashion and covering large amounts of the external antenna would cause what little signal is available to drop away, and the phone would report 'No Service'. It didn't take long for the furore to begin - reports of thousands of iPhone owners having the problem soon surfaced and it simply got out of hand. It got so bad (although it didn't seem to affect sales) that Apple called the media together for a press conference on the issue. Being Apple, they explained that every phone suffers the same problem, no phone is perfect and to resolve the non-issue they'll give a free case to every iPhone 4 user. And the case around the phone does alleviate the problem somewhat. That wasn't the end of it though. Next up was an issue with the proximity sensor. Apple did acknowledge this fault in its press conference

with a software update expected to fix it imminently. The proximity sensor is exactly what it suggests - it senses objects in close proximity - a face, for example - and turns off the display and touch panel during a phone call. It's a problem when that doesn't happen. Finally, let's not forget those white iPhones - Apple has pushed back their release until "later this year" due to a 'manufacturing issue'. An issue with the antenna, perhaps?

AB

App of the month

BBC News

This app makes reading the BBC News website easier on the iPhone and iPad. It condenses all the content of the site into the functional and free app. Also those pesky Flash videos that don't work on the iPhone play on this app no problem.



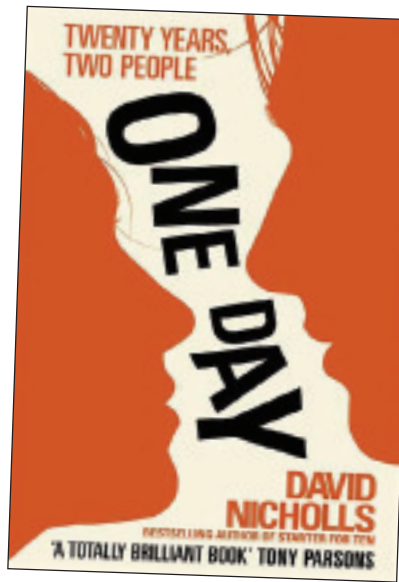
Taking it one day at a time

A novel charting the lives and losses of a pair of doomed lovers may leave you blubbing at the beach, warns Dean Beadle

ONE DAY introduces us to two newly graduated students, Emma and Dexter, on July 15 1988, as they contemplate their respective futures.

The twist in the title comes as author David Nicholls then revisits the would-be lovers on the same day every year for the next two decades, deftly showing how circumstances push them in and out of each others lives. It's a clever concept, and one which serves to highlight the crackling sexual tension between the pair which builds over the novel's timeline.

In this latest book, and indeed his earlier bestseller *Starter for Ten*, Nicholls has proven that he is an expert in writing about characters in transition, and through those times of great change, his beautifully crafted characters come to life. At the beginning of the book Emma is a judgmental and intellectual working class girl from the North. By comparison, Dexter is a southerner from a privileged background with a lack of direction and too much confidence. Never were two literary characters so wrong for each other and yet, at the same time, so well matched. This makes for sparkling chemistry and



compelling reading. On the surface, these characters should seem like tired clichés and perhaps, coming from another writer's pen, they would have been. However, Nicholls crafts them both into three dimensional and very believable personalities. As the book progresses and as each character is furnished with more life experience, it's hard not to become attached to the pair. It's easy to relate to both of the characters and as the book progressed I got the feeling that we've probably all known an Emma and a Dexter in our time.

Providing both laugh-out-loud moments and shock twists, this book is the definitive page turner and completely unputdownable. Enthralling, witty and involving, it's a classic will-they-won't-they romance set against the very real and progressive backdrop of nineties and noughties London. *One Day* is the ideal beach read, but be warned the ending is unexpected and extremely moving. Blubbing in your swimming costume is not a good look!

DB

One Day by David Nicholls is out in paperback now and in Greenwich libraries

Got an event or release for inclusion in Scene? 020-8921 5916
email: rodkitson@hotmail.com

Smart way to tune

Smart cars needn't be the slowest mode of transport since the milk float, reckons petrol-head Ossie Mustafa...

A FEW weeks ago I wrote about the Mercedes SLS E-Cell, a full on electric super car goes against the norm – a super car that gives drivers the chance to look cool in a sports car without having to confess their sins. This week I have found the polar opposite, a car which on the surface looks like it's made for saving polar bears, when in fact it is a vehicle with bags of power. I am talking about the Smart ForTwo Brabus – and this one even has the roof chopped off. Brabus is not an official part of Mercedes Benz, but are well known for the fine tuning of the Stuttgart motor firm, in fact last year they showed the world that they are full on recorded breakers with their take of a sport E-class by giving it more torque than any other road car, and it seems that they are at it again with the new Smart car convertible. Back in 2009 at the Frankfurt motor show Brabus

unveiled a fully electric Smart ForTwo, however the latest attempt at the eco car has produced a hard core street racer which gives less concern for CO2 levels produced. They have



BLUE SKY THINKING: it's a Smart car, but not as we know it



TEST DRIVE: the car has alloys and flip-top

kept the 1 litre engine, but slapped on a turbo and claim that it will go from 0-60 in 9.9 seconds, which, when talking about sports cars is pretty lame but when testing city cars this is rather fast. Furthermore Brabus have had to limit it to 95 mph as the chassis will just not handle going any faster. Apart from the engine tune ups the styling has had a mega revamp: big, wide alloy wheels are the order of the day, and a leather interior with more leather around the

steering wheel. The boys at Brabus have also included some cool extras, like the choice of any colour you can find, and in some cases, any two colours. This means that Brabus are giving you the ability to choose a city car giving the look of an eco-friendly car without having to lose the comfort or the performance, plus the man on the street will not scratch the side of your cute two toned city car. I believe this is what they call "having your cake and eating it".

OM

Raising the stakes

The lady is a vamp



"THE best film I've ever seen", said my 11 year-old daughter as we walked out of Eclipse, the third instalment of the

Twilight Saga film series based on the books of Stephenie Meyer. Praise indeed from the younger end of the movie's target audience.

For those of you like me, unfamiliar with the two prequels, the plot is fairly complex given the profusion of characters. Our still (at least for now) human heroine, Bella Swan (Kristen Stewart) is in terrible danger from Victoria, played by Bryce Dallas Howard – daughter of director, Ron – and the army of newborn vampires she is creating to avenge the death of her vampire mate, James. Bella herself is in love with Edward Cullen (Robert Pattinson), a vampire – and slayer of James – but whose love for Bella has (apparently) overcome his thirst for blood.

Fearing for Bella's safety, Edward seeks the help of Bella's college friend Jacob (Taylor Lautner) – albeit reluctantly since he knows that Jacob is also in love with Bella – and his family of werewolves, to help protect Bella from this threat. Powerless to act in this supernatural war, Bella herself becomes increasingly torn between her choice of an eternal life with Edward – at the cost of her human form, her family and her friends – and a more normal (this is Twilight remember), earthly life with Jacob and his family of werewolves.

The multitude of characters reflect the seriousness of their situations and for the most part are solemn and forlorn, often reminiscing over their lost, (human), lives. Bella is particularly intense, sullen even but also sultry, sensual and surprisingly, virginal. Edward, pale as death, orange contacts notwithstanding, is equally morose, intent on saving her soul despite her most persuasive efforts to "experience sex as a human". Jacob is Edward's emotional opposite. Shirtless for most of the film (even during a snowstorm), he is volatile, impetuous and impulsive and desperate to prove his love for and win, Bella.

While the leads are more than competent, there are some excellent supporting role performances, particularly from Peter Facinelli as Carlisle Cullen, the family's father figure and from Jasper Hale (Jackson Rathbone), who trains his family to fight the newborn army. Overall, and perhaps surprisingly given the sheer breath of the cast, the strong chemistry between the characters helps underpin the individual performances.

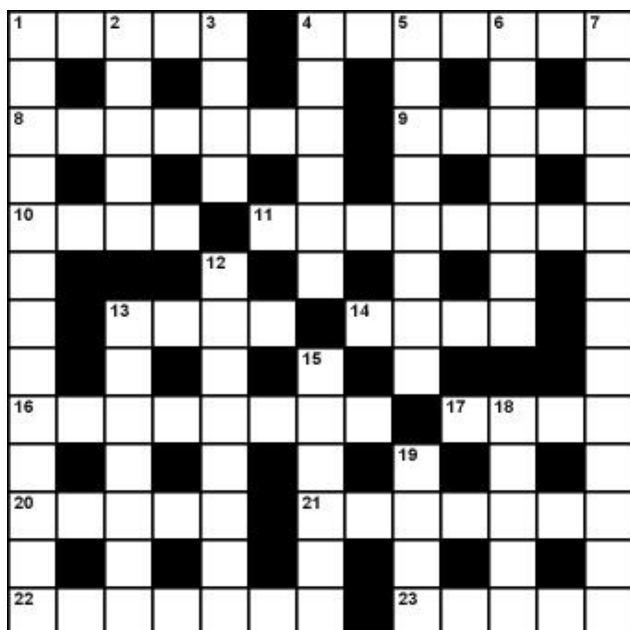
It is easy to criticise this series of films for its less than slick dialogue, it's somewhat questionable special effects (the werewolves are rather too obviously computer generated) and for its emphasis on teenage romance, but its themes of friendship, honour and commitment are, dare one say, worthy themes and indeed unusual today.

Verdict

A sure-fire hit for the saga's army of fans and mildly entertaining for the rest. 6/10

Dick Morgan

Time Crossword...



CLUES ACROSS

- 1) This Clark was gone with the wind (5)
- 4) Musical piece celebrating a famous coming (7)
- 8) In this time lapse all sorts of things can happen (7)
- 9) With doom you might find depression (5)
- 10) Long for with a tangible pain (4)
- 11) Diagrams drawn by hand or computer (8)
- 13) Convey the action in silence (4)
- 14) Exploits whatever to work as it's designed (4)
- 16) The one who takes stock, looks carefully and gives the test (8)
- 17) Ancient instrument sounds untruthful (4)
- 20) Carefully applied to hide real pallor (5)
- 21) With which an artist might spread on his paint (7)
- 22) Area of activity or dramatic production (7)
- 23) It was thick peasouper once in the land of summer wine (5)

CLUES DOWN

- 1) Show the teeth and support weight happily (4, 3, 4, 2)
- 2) Number of like items produced at any one time (5)
- 3) Said to be belted though not necessarily so for his seat (4)
- 4) Record of events long past, held for ever in the brain (6)
- 5) Visible construction designed to show you the way (4, 4)
- 6) Could be teeth, or for tinkling on an instrument (7)
- 7) Sounds like a domestic office worker but in fact a big cheese in government (4, 9)
- 12) Being about to occur (8)
- 13) Dimension expressed in specifics (7)
- 15) Who signs the document for hire, and pays the price (6)
- 18) As yet not fully grown or developed (5)
- 19) One of two equal portions of the whole (4)

LAST WEEK'S SOLUTIONS

ACROSS: 7) Must, 8) Headlamp, 9) Receiver, 10) View, 11) Gorse, 13) Intrude, 15) Reverse, 17) Elude, 20) User, 21) Nail file, 23) Vestment, 24) Earn.

DOWN: 1) Muse, 2) Stress, 3) Shave, 4) Gas ring, 5) Clover, 6) Embedded, 12) Overseen, 14) Asunder, 16) Egrets, 18) Lifter, 19) Tints, 22) Lure.

COMMUNITY police are keeping a close eye on an historic parish church after devastating vandalism attacks on both the memorial garden and the front lawn.

Parishioners at St Luke's in Charlton Village believe intruders must have been exercising a dog or dogs.

Church warden Gwen Zammit told GT: "After the first attack, we found branches of big shrubs in the memorial garden had been gnawed. The second time we found three-foot-long branches on the front lawn had been broken off and there were gnaw marks around the base of a tree."

Police hunt church vandals

by Pat Greenwood

She added: "We can't believe someone would do this to their local church."

The first vandalism was discovered on the morning of

Friday, July 16, in the quiet garden where people can sit to remember loved ones. The second attack came five days later.

Uniformed police officers have attended Sunday morning service to gather more details, and patrols have been alerted.

The site of St Luke's is mentioned in the Domesday Book and the church was rebuilt in 1630.

POP IN FOR OVER 50S

THAMESMEAD'S Pop in Parlour for over-50s is based at Evenlode House off Harrow Manor Way. It's open from 9.30am until 3:30pm, Monday-Friday. The group is run by volunteers and lunches are on sale. The Parlour

has its own bowling green and runs tai chi classes from 10am until 11:30am every Wednesday and bowling 10am until Noon every Thursday. For more information call 020-8310 7437 or just pop in.

London Borough of Greenwich Notice of Application for Planning Permission Town & Country Planning (General Development Procedure) Order 1995 (As Amended) Notice under Article 8

Proposed Development At: ELTHAM CONSERVATIVE CLUB & BOWLING GREEN, 254 ELTHAM HIGH STREET, ELTHAM, LONDON, SE9 1AA Reference Number: 10/1963/F

Notice is hereby given that an application is being made to Greenwich Council By: Croudace Homes in Partnership For Full Planning Permission in respect of: Refurbishment of the Eltham Conservative Club including the construction of a two storey side extension, ground floor side and rear extension, first floor side extension and new car park layout. The proposal also includes the development of the site to provide 13 houses (12 x 3 bed and 1 x 4 bed) and 8 flats (2 x 1 bed and 6 x 2 bed) with associated car parking and vehicular access (off Footscray Road), provision of a Community Hall, relocation of bowling green, associated landscaping and refuse storage provision.

DEPARTURE FROM THE UNITARY DEVELOPMENT PLAN

Drawing Number: EHS/116/100, 101, 102, 103, 104, 105, 106, 107, 108 RevA, EHS/116/111, EHS/116/112, 113, 120, 121, 122, 123, 124, 125, 126, EHS/116/127, 128, EHS/116/129, EHS/116/130, EHS/116/131, 150, 151, 152, EHS/116/153 (photograph), 3462-Sheet-1 RevA, Design and Access Statement, Preliminary Site Assessment Report, Site Photos, Statement of Community Involvement, Planning Statement, Landscape Design Statement, Arboricultural Implication Assessment, Report on Trees- Doc1 and 2, Ecological Data Search, Ecological Assessment, Thames Water Asset Location Search, Proposed Development Schedule, and Schedule of External Materials/Works.

A copy of the application and any plans and/or documents submitted with it is available for inspection by the public at the offices of:

Development Planning, Crown Building 5th Floor, 48 Woolwich New Road, London SE18 6HQ

between the hours of 9:30 to 16:30 Monday to Thursday and 9:30 to 16:00 Friday and Eltham Library, Eltham High Street SE9 2HA between normal opening times.

Any person who wishes to make representations to the Council about the application should do so in writing by 01/09/2010 to the above address stating the full reference number(s) above.

Date: 11-Aug-2010

Steve Pallett - Assistant Director



TOWN AND COUNTRY PLANNING ACT 1990 PUBLIC INQUIRY

At The Public Hall, Town Hall, Wellington Street, Woolwich SE18 6PW
On Tuesday 7 September 2010 at 10.00

REASON FOR INQUIRY

Appeals by Greenwich Hospital

Relating to the application to London Borough of Greenwich

For Demolition of unlisted buildings in Greenwich West Conservation Area on land bounded by Greenwich Church Street, College Approach, King William Walk and Nelson Road. Construction of development for hotel (C1), retail (A1-A5) and storage, ancillary office (B1), new market roof, operation of a market, new servicing areas and associated works. Erection of temporary structure to include retail (for classes A1 and A5) and storage, operation of a market provision for pedestrian access, diversion of cycle route and associated works.

At 3 Greenwich Market, London SE10 9HZ and Greenwich and Monument Gardens, King William Walk, Greenwich.

An Inspector appointed by the Secretary of State under paragraph 1(1) of schedule 6 to the Town and Country Planning Act 1990 will attend at the place, date and time shown above to hear the appeal prior to reporting to the Secretary of State.

Members of the public may attend the inquiry and, at the Inspector's direction, express their views. If you or anyone you know has a disability and is concerned about facilities at the inquiry venue, you should contact the council to confirm that suitable provisions are in place. Documents relating to the appeals can be viewed at the Council's offices by prior arrangement.

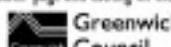
Planning Inspectorate Reference: APP/E5330/E/10/2123272, APP/E5330/A/10/2123274 and APP/E5330/A/10/2123273

Contact point at the Planning Inspectorate: Alan Ridley, 4/02, Temple Quay House, 2 The Square, Temple Quay, Bristol BS1 6PN. Tel: 01173 728933

Further Appeal references:

APP/E5330/A/10/2123274 and APP/E5330/A/10/2123273

You can use the Internet to submit documents, to see information and to check the progress of the case through the Planning Portal. The address of our search page is: <http://www.planningportal.gov.uk/portal/queries.asp>. You can access this case by putting the above reference number into the "Case Ref" field of the "Search" page and clicking on the search button.



LONDON BOROUGH OF GREENWICH ROAD TRAFFIC REGULATION ACT 1984 - SECTION 14(1) STOWAGE - TEMPORARY ROAD CLOSURE

1. NOTICE IS HEREBY GIVEN that Greenwich Borough Council intends to make an Order to accommodate vehicles being used in association with the construction of a children's centre adjacent to the carriageway in Stowage. The effect of the Order would be to temporarily prohibit vehicles from entering, exiting, proceeding or waiting (including waiting for the purposes of loading or unloading) in Stowage, between the western kerb-line of Gosson Street and the eastern kerb-line of Dagford Green.

2. The above road closure would only apply at such times and to such extent as shall be indicated by the placing of the appropriate traffic signs. Vehicular access to properties affected by these works would be maintained wherever possible subject to the extent and operations of the works.

3. Whilst the road closure is in operation, affected traffic would be diverted via local roads.

4. The prohibitions imposed by the Order would come into operation from 23rd August 2010 and it is expected that the works would take approximately three days (not necessarily concurrently) to complete.

5. Queries concerning these works should be directed to Greenwich Council's Directorate of Regeneration, Enterprise & Skills on 020 8921 6140.

Assistant Director, Strategic Transportation

Crown Building

48 Woolwich New Road

SE18 6HQ

Dated 10th August 2010

(signature) J. J. J. J.



LONDON BOROUGH OF GREENWICH ROAD TRAFFIC REGULATION ACT 1984 - SECTION 14 CHARLTON LANE - TEMPORARY ROAD CLOSURE AT JUNCTION WITH FAIRFIELD GROVE

1. NOTICE IS HEREBY GIVEN that Greenwich Borough Council intends to make an Order to accommodate carriageway repair works in Charlton Lane at its junction with Fairfield Grove. The effect of the Order would be to temporarily prohibit vehicles from entering, proceeding or waiting in Charlton Lane, between the southern kerb-line of Fairfield Grove and the common boundary of Nos. 115 and 117 Charlton Lane.

2. The above road closure would only apply at such times and to such extent as shall be indicated by the placing of the appropriate traffic signs.

3. Whilst the road closure is in operation, affected traffic would be diverted via Fairfield Grove and Charlton Park Road, and via Hessa.

4. The Order would come into force on 17th August 2010 and would continue in force for up to 18 months, or until the works have been completed, whichever is the sooner. However, it is expected that the works would take approximately two weeks to complete.

5. Queries concerning these works should be directed to Greenwich Council's Directorate of Regeneration, Enterprise & Skills on 020 8921 6024.

Assistant Director, Strategic Transportation

Crown Building

48 Woolwich New Road

SE18 6HQ

Dated 10th August 2010

(signature) J. J. J. J.



LONDON BOROUGH OF GREENWICH The Greenwich (Waiting and Loading Restriction) (Amendment No. 33) Order 2010 The Greenwich (Free Parking Places) (No. 5) (Amendment No. 17) Order 2010

1. NOTICE IS HEREBY GIVEN that Greenwich Borough Council on 6th August 2010 made the above-mentioned Orders under sections 6 and 124 of and Part IV of Schedule 9 to the Road Traffic Regulation Act 1984, as amended. The Orders will come into operation on 11th August 2010.

2. The general effect of the Orders will be to:

(a) introduce "at any time" waiting and loading restrictions:

(i) on the north-west side of Charlton Park Lane, from a point 5 metres north-east of the common boundary of Nos. 106 and 108 Charlton Park Lane to a point 27 metres north-east of the north-eastern wall of No. 110 Charlton Park Lane;

(ii) on the north-west side of Charlton Park Lane, from a point 18 metres south-west of its junction with Cemetery Lane south-westward for a distance of 26 metres; and

(iii) on the south-east side of Charlton Park Lane, from a point 5 metres north-east of the common boundary of Nos. 106 and 108 Charlton Park Lane to a point 18 metres south-west of its junction with Cemetery Lane;

(b) introduce "at any time" loading restrictions:

(i) on both sides of Canberra Road, from its junction with Charlton Park Lane to a point 23 metres east of the party wall of Nos. 146 and 148 Canberra Road;

(ii) on the north-east side of Cemetery Lane, for a distance of 132 metres north-westwards from its junction with Charlton Park Lane; and

(iii) on the north-east side of Cemetery Lane, for a distance of 94 metres north-westwards from its junction with Charlton Park Lane; and

(c) correct minor discrepancies between existing Order designations and on-street markings with respect to the existing double yellow line "at any time" waiting restrictions and free short-stay parking places in Cemetery Lane (there would be no changes to on-street markings).

3. Further information may be obtained by telephoning Strategic Transportation on 020 8921 6024.

4. The Orders and other documents giving more detailed particulars of the Orders are available for inspection during normal office hours until the end of six weeks from the date on which the Orders were made at the Directorate of Regeneration, Enterprise and Skills, Strategic Transportation, Greenwich Council, Crown Building, 48 Woolwich New Road, SE18 6HQ.

5. If any person wishes to question the validity of the Orders or of any of the provisions contained therein on the grounds that they are not within the powers conferred by the Road Traffic Regulation Act 1984, or that any requirement of that Act or of any instrument made under that Act has not been complied with, that person may, within six weeks from the date on which the Orders were made, apply for that purpose to the High Court.

Assistant Director, Strategic Transportation

Crown Building

48 Woolwich New Road

SE18 6HQ

Dated 10th August 2010

(signature) J. J. J. J.



The next issue of GT is published on August 17. To advertise call Seniha on 020 8921 5010, Gaynor on 020 8921 5039 or Nicola on 020 8921 5572

SPORT

Addicks start with a tense victory

From page 28

tactically sound to leave him one-on-one with the quicksilver left winger but that's where he found himself as his tormentor again eluded him on the byeline, from where most of his damage is inflicted.

This time, Sodje met the firmly drilled cutback and made no mistake. An already upbeat crowd relaxed in smug expectation of more to come. They were to wait in vain.

The irrepressible Reid tested Jalal with a decent free kick before ex-Addick Harry Arter hit back for the visitors. Forced wide by Christian Dailly's old-pro savvy, Arter managed a drive on the run, which curled into the sidenet.

Dailly's experience and captain's example were to prove invaluable as Charlton

Persuading this model pro to extend his stay at The Valley must rank as one of Phil Parkinson's more impressive managerial coups

gradually lost their early grip and invited Bournemouth back into a one-sided game. Still fit as a flea, Dailly won everything in the air, blocked and tackled heroically, while finding time to intuitively organise his fellow defenders.

Persuading this model pro to extend his stay at The Valley must rank as one of Phil Parkinson's more impressive managerial coups. Age is, after all, no more than a state of mind as long as the legs continue to do their stuff. And Dailly's legs carry him around



NEW BOY ON THE BALL: Lee Martin does his stuff for the Addicks against Bournemouth at The Valley on Saturday

like a young buck.

Charlton's failure to press home their advantage in a first half they'd largely dominated naturally left them vulnerable. Bournemouth started the second period with a flurry of

corners and free kicks, one of which looked dangerously like a penalty when the industrious Alan McCormack upended Marc Pugh on the 18-yard line.

The Addicks' cause was

hardly helped by the dismissal, just past the hour, of Jose Semedo for a mistimed, though hardly malicious, lunge on substitute Michael Symes. Determining intent is no part of a referee's brief, of

course, and Symes' agonised antics sealed Semedo's fate.

Parkinson promptly shored up the defensive midfield hole by replacing Abbott with Therry Racon, but the Cherries sensed a chance of unexpected salvation.

With the home side wilting, Brett Pitman headed Bradbury's cross too high, Danny Hollands went close from long range and Symes's shot hit a defensive hand, with Hegley again helpfully ruling in Charlton's favour (the big clubs are always favoured by the officials, don't you find?).

By the time Pearce headed Pugh's inswinging corner on the bounce over the bar, Pugh cut in to sting Rob Elliot's palms with a rising drive and Rhys Wiggins sent a left-footed rocket inches off target, the Addicks were a nerve-jangled version of the dominant side which imperiously strutted through the opening half hour.

But with full backs Solly and Johnnie Jackson outstanding in support of Dailly and reliable pragmatist Gary Doherty, they crawled wearily over the line. Piece of cake, really, with Cherries on the top. So relax, chaps, only 45 league games left.

TEAMS

Charlton (4-4-2): Elliot, Solly, Doherty, Dailly, Jackson, Wagstaff (Martin, 72), Semedo (sent off), McCormack, Reid, Sodje (Francis, 88), Abbott (Racon, 64). Not used: Worner, Mambo, Fry, Smart.

Bournemouth (4-5-1): Jalal, Bradbury (Purches, 75), Pearce, Bartley (Hollands, 66), Cooper, Pugh, Robinson, Feeney, Wiggins, Arter (Symes, 46), Pitman. Not used: Thomas, Garry, McQuoid, Cummings.

Referee: Grant Hegley.
Att: 16,236.

Addicks sign young Hammer under new loan scheme

CHARLTON have signed West Ham United defender Matt Fry on a youth loan until January 4, the Addicks announced on Friday morning, writes Matt Wright. Fry, who recently penned a new two-year professional deal with West Ham, is a familiar face in SE7, having spent time on loan from the Hammers towards the end of last term.

However, due to Football League rules stating clubs may only include a maximum of five loan players in their matchday squads, Fry only made the substitutes' bench on one occasion for the first

team - the heartbreaking play-off semi-final second-leg loss to Swindon Town. Fry, though, is now back at The Valley, and is the first player to be recruited by Charlton as part of a new youth loan system which applies to second-year scholars and U21 players. Under the terms of the deal, Fry will join the Addicks, but will also be eligible to play reserve matches for the Hammers during the loan period. West Ham, who have retained the right to recall the defender at any stage after the first 28 days have elapsed, have also given him

permission to play in the Carling Cup and Johnstone's Paint Trophy. He has been given the No. 19 jersey. Equally comfortable at both left-back and centre-back, Fry started at Ebbsfleet United, but joined West Ham at the age of 11, signing his first professional contract in June, 2009. In October that year, the 19-year-old joined Gillingham on loan, making his home debut in the 1-1 draw with the Addicks in the same month. He played a total of 13 games for the Gills but returned to West Ham in early January after a knee

injury ruled him out of action for six weeks, before switching to the Addicks in March. And although he didn't make his Addicks debut, he did feature as an overage player in two U18 matches. Upon signing his new two-year contract with the Hammers, Fry said: "It's obviously good for me to be offered a new contract of any length, but to get two years shows that the club has faith in me and it is going to spur me on to work even harder and go even further. "I'm self-confident and without that I don't think I'd

get very far as a professional footballer. I believe I have the qualities to become a first-team player at West Ham. I'm not saying that I'll be ready for the Premier League on the first day of next season, but if I'm ready in a year or 18 months' time, then I'll be pleased with my progress." He added: "I'm still young for a centre-back and have a lot of developing still to do, both physically and in terms of improving my concentration on the pitch. In the Premier League, if you let your guard down for just a second or two, it can cost your team a goal."

SPORT

CHARLTON SNAP UP YOUNG HAMMER ON LOAN
Report - PAGE27

Only 45 more to go

Addicks start with a tense victory

Charlton 1
Bournemouth 0

by Kevin Nolan

A HEARTWARMINGLY large army of Charlton loyalists - swelled, it must be said, by over 2,000 wide-eyed daytrippers from the South Coast - worked their way through a gamut of emotions before collapsing in relief as referee Grant Hegley almost reluctantly called a halt to nearly six minutes of added time and freed them to celebrate.

It had all seemed so easy when Akpo Sodje fired the Addicks in front after 22 minutes of non-stop pressure on the bewildered visitors, but the veterans among us advised caution. Easy is a stranger to The Valley.

Clearly out of their depth during the early going, Bournemouth could already

have been two down before Sodje struck. Inspired by Kyel Reid (think Lloyd Sam with satnav), their hosts tore through them at will.

In quick succession, Scott Wagstaff finished a neat bout of interpassing between Alan McCormack and Chris Solly by shooting over the bar, then Shwan Jalal saved alertly at Sodje's feet.

Reid followed by easing past creaking old soldier Lee Bradbury along the left byeline to cross for Sodje to blast wastefully wide. One of five debutants, Pawel Abbott made similar inroads on the right but Jason Pearce alertly beat Sodje to the low centre. The Cherries were beginning to feel they'd weathered the worst when Sodje scored.

Re-invented as a right back in the twilight of a seemingly endless career, 35-year-old Bradbury was overmatched in dealing with Reid. It wasn't

Turn to Page 27

OKAY FOR STARTERS: Charlton Athletic's Akpo Sodje celebrates with team mate Pawel Abbott after scoring his side's first goal of the season

PA



Mayday Cars
020 8859 7666

The Cheapest Form of Transport
Still Only £4.50 Minimum for up to 2 Miles!

FULLY COMPUTERISED BOOKING AND DESPATCH SYSTEM
WITH GPS TRACKING ON ALL CARS.

CALL BACK AND TEXT BACK ON ALL BOOKINGS

WE'RE HAPPY TO GIVE YOU A QUOTE FOR YOUR JOURNEY
BEFORE YOU TRAVEL

Example journeys made with Mayday Cars:

Gatwick £45 • Heathrow £55 • Stanstead £55
City £25 • London Bridge £25 • Waterloo £25
Kings Cross £30 • Euston £30 • Paddinton £35
Charing Cross £30 • Ebsfleet £27 • West End £30
Ashford £50 • Sevenoaks • £30 Dartford £20
Romford £35

USE THE VOUCHERS TO CLAIM YOUR DISCOUNT ON AIRPORT JOURNEYS

£5 OFF OUTBOUND	£5 OFF RETURN
Name	Name
Address	Date
Contact No.	Flight No.
	Airport
	Contact No.